

30 Grevillea Crescent, Berkeley Vale, NSW 2261

House For Sale

Tuesday, 9 January 2024

30 Grevillea Crescent, Berkeley Vale, NSW 2261

Bedrooms: 6

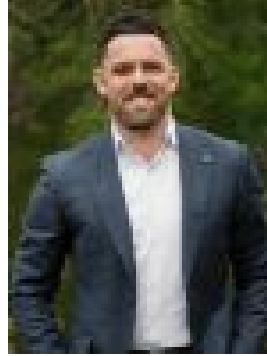
Bathrooms: 2

Parkings: 4

Type: House



Volkan Akintetik
0499830247



Reece Caira
0431013342

Contact Agent

A home that provides space, versatility and location does not enter the market very often but... We have found this gem just for you in the highly sought after suburb of Berkeley Vale! The home is designed to cater for multigenerational living, with a dual occupancy arrangement all under one roof! Downstairs, the in-law accommodation/teenager retreat boasts its own spacious living+dining area, fully equipped kitchen and two bedrooms. For the remainder of the family, features continue upstairs with four bedrooms that are well separated throughout the home, a stunning open plan kitchen and renovated bathroom. As the home sits upon a corner block that offers great side access, you'll find easy and direct access into a large double lock up garage with bonus off street parking with a double carport. Properties in this location do not last long, please get in touch with our sales team today to organize your private viewing!

- Dual living arrangement. Perfect for In-law accommodation or teenager retreat.
- Functional floorplan with multiple indoor and outdoor spaces.
- Great corner block location, level block with side access to a fantastic garage
- 3km drive to the M1 motorway, Tuggerah Westfield and the Tuggerah Train Station!

View: By Appointment
Agency: Stone Real Estate
Agent: Reece Caira and Volkan Akintetik