

30 Laughlin Avenue, Nunawading, Vic 3131



Sold House

Wednesday, 13 September 2023

30 Laughlin Avenue, Nunawading, Vic 3131

Bedrooms: 3

Bathrooms: 1

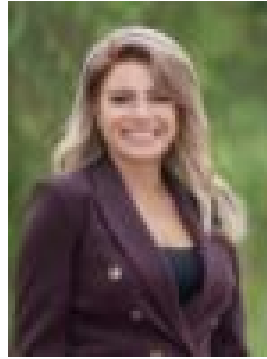
Parkings: 1

Area: 593 m2

Type: House



Charles Shi
0423633253



Christine Bafas
0427835610

Contact agent

Here's a red-hot opportunity in a popular neighbourhood that's always in high demand. Liveable with scope to update, renovate, lease out or start again with a luxurious new home (STCA), the choices are endless and savvy buyers will recognise the home's true potential. Sited on approx. 593sqm a short walk from Nunawading Shopping Centre and Train Station, the classic floorplan reveals a sunny north-facing lounge and dining room, complemented by three bedrooms and a retro-style kitchen. In a wonderful location, a stone's throw from Nunawading Christian College at the end of the street, bus services from Springvale Road, within the catchment zone for Mount Pleasant Road Primary School and Mullauna College, with swift access to Blackburn Lake Sanctuary, Brand Smart Outlet, Blackburn Station Village, the Eastern Freeway/EastLink, Deakin University and major shopping destinations to name a few.