

30 Locosi Street, Schofields, NSW 2762



Sold House

Friday, 5 April 2024

30 Locosi Street, Schofields, NSW 2762

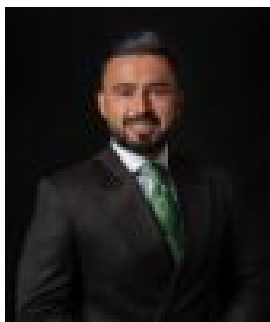
Bedrooms: 4

Bathrooms: 2

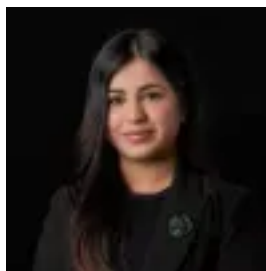
Parkings: 2

Area: 395 m2

Type: House



Amit Kumar
0288964336



Siya Sachdeva
0288964336

\$1,370,000

Positioned in one of the most desirable parts of Schofields, this beautifully planned home is an exceptional property where you will find yourself in a vibrant neighborhood, surrounded by essential amenities, schools, parks, and more. This home stands as an exquisite embodiment of modern family living, boasting a spacious and well-designed single-level layout. Showcasing an amazing and dynamic layout with a versatile floor plan, effortlessly combining the living, dining, and kitchen areas, making it the 'hub' of the home and creating the perfect space for entertainment. Natural light flows seamlessly through the home throughout the whole day and out to the outdoor alfresco area and spacious backyard. The kitchen has been well-appointed and features high-end quality appliances, stone benchtops, a four-burner gas cooktop, a 600mm oven, built-in microwave, a waterfall island benchtop with an eat-in breakfast bar, and plenty of storage space. Accommodation consists of four well-sized bedrooms, each with built-in robes. The master bedroom showcases a private modern ensuite and walk-in wardrobe. All bathrooms also feature floor-to-ceiling tiles. Features you will love:- LED lights throughout the home- Four good-sized bedrooms including master, with two having built-in wardrobes- Master bedroom with ensuite & walk-in wardrobe- Separate split-system air-conditioning- Ducted air-conditioning with 3 zones- Genesis bamboo flooring in bedrooms and hallway- Open-plan living area and formal living areas- 2700mm ceiling height- 7.7kw solar 28-panel installation- Internal laundry with cupboards and storage- Crimsafe Security screens on front and rear doors- Floor-to-ceiling full-length tiling in bathrooms- Frameless shower screens in ensuite- Versa 600mm x 600mm ceramic tiles in entry, kitchen, and dining area- Upgraded Black Wenge Gloss kitchen cupboards- Upgraded Laminam Filo Ghisa Kitchen Splashback- Portobello 40mm Quantum Quartz benchtop with Waterfall Edge- 5 Camera CCTV with 24/7 recording- Remote-controlled, double lock-up garage with internal access and built-in storage- Low-maintenance front and back lawns Location Highlights:- 5 minutes' drive to Schofields Train Station and Schofields Shopping Village- 7 minutes' drive to Tallawong Train Station- A moment's walk to the childcare center- 10 minutes' drive to Rouse Hill Town Centre- Close to schools, local parks, bus stops, and more- Local parks nearby Disclaimer: All information contained herein is obtained from property owners or third-party sources which we believe are reliable. We have no reason to doubt its accuracy; however, we cannot guarantee it. All interested persons should rely on their inquiries.