

30 Lowndes Road, Bannockburn, Vic 3331



House For Sale

Monday, 20 May 2024

30 Lowndes Road, Bannockburn, Vic 3331

Bedrooms: 4

Bathrooms: 2

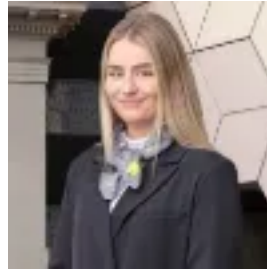
Parkings: 4

Area: 4150 m2

Type: House



George Politis
0352411331



Mollie Chandler
0475843029

\$1,200,000-\$1,300,000

Crafted with the essence of family life in mind, this remarkable four-bedroom residence sprawls across approximately one acre (4103sqm), offering an ideal sanctuary for a growing family. Boasting ample space for all, including a dedicated study for remote work needs, it caters to every aspect of modern living. Upon entry, a grand foyer sets the tone for this spacious home, leading into a capacious family room. Here, a charming wood heater provides warmth, complemented by the convenience of dual reverse cycle heating/cooling systems ensuring year-round comfort. The heart of the home, a gourmet kitchen, captivates with its stunning 40mm stone benchtops and waterfall ends, abundant cupboard space, and premium appliances including a 900mm oven & cooktop, dishwasher, and integrated rangehood. A walk-in pantry adds to the allure. All four bedrooms boast generous walk-in robes with ample shelving, while the masterfully designed layout ensures seamless integration between indoor and outdoor spaces. From the lush garden to the children's play area with a swing set, every vista exudes tranquillity and charm, enhanced by expansive windows inviting natural light to fill the interior. Additional highlights include an energy-efficient wood burner, a reverse osmosis water filter system, LED lighting throughout, remote-controlled ceiling fans, and a 10-year builder's guarantee. The property also features a variety of fruit trees and shrubs, providing a picturesque backdrop to the serene surroundings, 8x9shed and stunning swimming pool. Conveniently located just 20 minutes from Geelong and an hour from Melbourne, this meticulously crafted home presents a rare opportunity to embrace rural living without compromising on modern comforts. With its superb finishes and potential for further expansion, why build when you can move into this immaculate abode nestled within established landscapes.