

30 Murphy Crescent, Whyalla Stuart, SA 5608



House For Sale

Thursday, 9 May 2024

30 Murphy Crescent, Whyalla Stuart, SA 5608

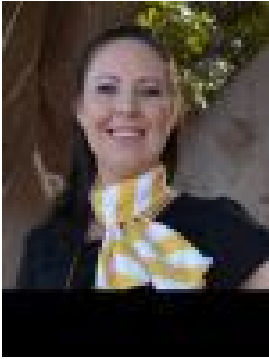
Bedrooms: 3

Bathrooms: 1

Parkings: 2

Area: 630 m2

Type: House



Leah Kirk

Price By Negotiation

An excellent opportunity to secure yourself the perfect first home or a wise investment offering comfortable lifestyle living for you or your tenants. This 1960 brick maisonette features a thoughtful floorplan boasting 3 bedrooms, 1 bathroom plus a generous size shed. For the investor, this property is currently tenanted on a fixed term lease until 20th June 2024 at \$230.00 per week rent. Beautifully located on an allotment size of approximately 630m², you are welcomed with tidy gardens and a driveway leading to a single carport with a roller door to secure your vehicle. Upon entry you are greeted with a light-filled living room complete with a split system air conditioner for your comfort, blinds and timber floorboards which flow throughout the main areas of the home. Continuing through you are met with a combined kitchen and dining room featuring the neat original kitchen cabinetry offering plenty of storage and bench space plus an upright electric oven and stove top. Moving through to the hallway places 3 generous size bedrooms designed for your comfort complete with blinds fitted to the windows and continues the timber floorboards to compliment each room. Continuing through the hallway you are met with an upgraded bathroom set in a functional design featuring a shower over the bathtub and basin. Following back through to the rear of the home welcomes you to the rear yard featuring the undercover carport leading to an impressive size shed offering roller door access finished with concrete flooring. The rear yard is generous in size and offers plenty of space to move and play or to create as your own. This home offers many desirable features and is set in a location of convenience within close proximity to schools, shops and transport. Don't miss out on this great opportunity and contact Leah Kirk today! Council Rates: Approximately \$1,747.78 per annum Rental Appraisal: Available upon request Disclaimer: We have obtained all information in this document from sources we believe to be reliable; However we cannot guarantee its accuracy and no warranty or representative is given or made as to the correctness of information supplied and neither the owners nor their agent can accept responsibility for error or omissions. Prospective purchasers are advised to carry out their own investigations. All inclusions and exclusions must be confirmed in the Contract of Sale.