

30 Park Hill Drive, Ringwood North, Vic 3134

House For Sale

Wednesday, 22 May 2024



30 Park Hill Drive, Ringwood North, Vic 3134

Bedrooms: 4

Bathrooms: 3

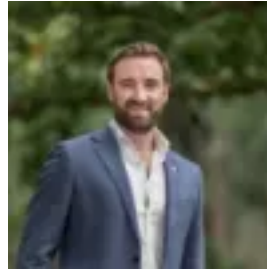
Parkings: 2

Area: 645 m2

Type: House



Adrian Nyariri
0455089610



Daniel Broadbent
0398706211

\$1,100,000 - \$1,200,000

Quietly placed on the corner of a cul de sac in a highly sought after family pocket of Ringwood North, this home epitomises elegance with its new plush carpets, hardwood timber detail and timeless appointments. Ideal for a family with two large living areas, generous established backyard for entertaining and an unbeatable location within minutes of Eastland, Ringwood Station and Eastlink, as well as the Ringwood North shopping precinct. A radiant floorplan provides a wonderful formal living space and elevated refined dining area or optional open study space with large glass door creating seamless zoning. Surrounded by four robed bedrooms and two smartly renovated bathrooms, including the master with mirrored sliding built-in robes, and semi ensuite access to the main bathroom. Comprising bath and vanity, separate shower room with rainfall and handheld attachments plus separate WC. The second stylish bathroom with separate WC services guests and is positioned off a generous family/meals area with oversized windows and elegant sheers. Greeting a contemporary kitchen with gorgeous black and white palette and terrazzo-look tiles. Boasting updated stainless steel appliances including oven and microwave, gas cooktop plus a white Bosch dishwasher that blends with the crisp cabinetry. Outside is a haven for families to go about their everyday activities in private or host a fabulous celebration in established landscaped, easy-care gardens. An undercover entertaining area is ideal for kicking back with a BBQ cooked on the built-in facilities. A separate gazebo is decked for a lovely space to enjoy a cuppa, or could be remodelled as a sandpit for kids. Adjoining a double garage accessed from Hilldale Close. Affording further comfort with a good sized laundry, gas ducted heating, evaporative cooling, plus curtains, sheers and blinds. One of the most popular suburbs for its connections to a range of high class education. Close by to zoned Norwood Secondary College and Ringwood North Primary, with effortless bus connections to Yarra Valley Grammar, Luther College, Tintern Grammar, Whitefriars College, and Our Lady of Sion via a 20 minutes train ride from Ringwood Station. Stroll to Eastland Shopping Centre and Town Square, or load up your supplies at Costco and Bunnings. Leisurely walk or cycle along the Mullum Mullum Trail, with Eastlink and the Eastern Freeway only a short distance away. Surrounded by pocket parks, preschools and childcare. All this convenience is only half an hour from the Dandenong Ranges and Yarra Valley wineries. Inspect now and add your own further design style to this lovely home. Disclaimer: The information contained herein has been supplied to us and is to be used as a guide only. No information in this report is to be relied on for financial or legal purposes. Although every care has been taken in the preparation of the above information, we stress that particulars herein are for information only and do not constitute representation by the Owners or Agent.