

30 Windsor Circuit, Maudsland, Qld 4210

SOLD STREET

Sold House

Wednesday, 28 February 2024

30 Windsor Circuit, Maudsland, Qld 4210

Bedrooms: 4

Bathrooms: 2

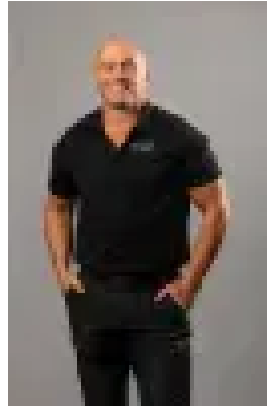
Parkings: 2

Area: 814 m2

Type: House



Kirsty Cashmore
0756368935



Matt Dalziell
0756363935

\$1,200,000

First time to the market, 30 Windsor Circuit offers an outstanding opportunity to secure a spacious family home located in sought after Huntington Rise estate. Sure to impress this 33sq abode is nestled in an established enclave of quality homes. Perfect for the growing tribe, this residence radiates fun family times and memories to be had. From numerous windows, high ceiling and bright white spaces, there is an abundance of natural light that bathes the living spaces. It forms an inviting sanctuary, ideal for children to play freely and adults to entertain or relax. Step inside to discover a comfortable and welcoming ambiance that seamlessly blends relaxation with practicality. The outdoor living area is very carefree at present and offers the opportunity for a swimming pool and more garden spaces. The kids are catered for at the lower-level part of the property with extra lawn, sandpit and slide as well as raised planter boxes to create your own vegetable patch. Features include:- Floor area 306sqm- Land area 814sqm- Built in 2020 by Porter Davis with all the modern conveniences - 4 bedrooms, with main featuring deluxe ensuite and WIR- Multiple living spaces, open plan dining and lounge, kids retreat and a great rumpus room or work from home space, its huge!- Beautiful kitchen you will want to cook in all the time, featuring large butlers pantry, integrated 900mm oven with GAS cook top, Island bench with 40mm stone benchtop and under mount sink, large plumbed fridge space- Under roof Alfresco- High 2700mm ceilings creating a feeling of space and light- Ducted air conditioning- Separate laundry- Powder room- Gated 2.7m side access for boat/caravan- Electric hot water system Situated on a large 814sqm block with the bonus convenience of off-street parking adding a valuable touch, effortlessly accommodating your boat, trailer, or motorhome. Furthermore, this residence holds a strategic location, just minutes away from main arterial routes, Pacific Pines, schools, parks and walkways. In essence, this home embodies the perfect fusion of coastal vibes, practicality, and a place the family can call home. Don't miss out! View at the upcoming open homes or call for a private inspection.