

**300 Eastbourne Road, Rosebud, Vic 3939**

**Sold Unit**

Thursday, 22 February 2024



300 Eastbourne Road, Rosebud, Vic 3939

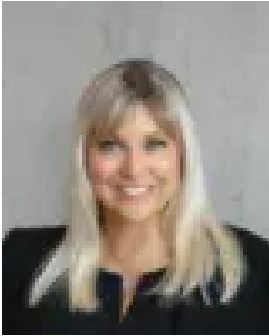
**Bedrooms: 3**

**Bathrooms: 1**

**Parkings: 1**

**Area: 366 m2**

**Type: Unit**



Tanya Menz  
0403312338

**\$630,000**

Radiating with warmth and potential in one of Rosebud's most convenient settings, this charming 3-bedroom home showcases a generous layout with distinctive charming touches, presenting the ideal foundation for effortless living or modernisation. Timber floors and exposed brick walls evoke a delightful charm in the large L-shaped lounge and dining space, wrapping around to a laminate kitchen with quality cooking appliances and a convenient breakfast bar. Sliding doors open to a large yard perfect for those with pets or alfresco dreams, awaiting the imagination of a creative renovator for a large deck or terrace. A unique third bedroom offers the potential for a home office or second living space, separate from two additional robed bedrooms, a family bathroom, a separate toilet and laundry lining the hallway. Additionally finished with a single garage with through access, double gates to the rear yard, sun blinds and a split-system air conditioner, it sits directly opposite Olympic Park, just moments from buses and a short walk from Eastbourne Primary, Rosebud Secondary, Rosebud Plaza, and the shimmering Rosebud foreshore.