

3008/311 Hume Highway, Liverpool, NSW 2170

STONE

Unit For Sale

Wednesday, 1 May 2024

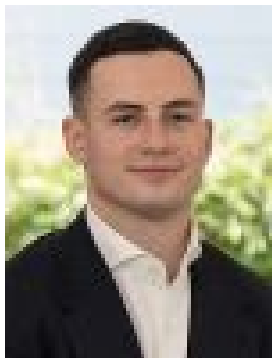
3008/311 Hume Highway, Liverpool, NSW 2170

Bedrooms: 2

Bathrooms: 2

Parkings: 1

Type: Unit



Andrew Diadyk
0246553000



Danyal Mushtaq
0479178429

\$575,000 - \$605,000

Offering a blend of luxury and modern living, this two-bedroom apartment is nestled in the heart of Liverpool. With its prime location, high-end finishes and contemporary design combine to create an unparalleled living experience. Step inside to discover an open-plan living space that seamlessly flows onto the enclosed balcony. With two well-appointed bedrooms, each providing ample space, natural light, built-in wardrobes, with the main bedroom featuring its own ensuite for added convenience. The modern kitchen boasts waterfall stone benchtop with breakfast bar seating, integrated appliances and gas cooking. With its prime location, it is just moments away from essential amenities such as Hospitals, Schools, Westfields Shopping Center, Liverpool Train station and Bus Stops. This highly desirable apartment is the ideal home for first home buyers and investors looking for luxury and modern living. Key Features:> Gas cooking> Internal laundry> 30th floor position> Allocated car space> Ducted air conditioning> Built-in to the master bedroom> Recessed ceilings to the living area> Updated flooring, tiles, plush carpets

Approximate distance:> 1.1 KM - Liverpool Station> 1.3 KM - Westfields Liverpool> 1.7 KM - Liverpool Hospital> 2.6 KM - Liverpool High School> 4.6 KM - Liverpool Catholic Club

NOTE: In preparing this, we have used reasonable endeavours to provide information that is true, however it is provided on the basis that readers will be responsible for making their own assessment of the information and are advised to verify all relevant representations, statements and information. All photographs and images are representative only, for marketing purposes.