

301/12-14 Grosvenor Street, Neutral Bay, NSW 2089 **RayWhite**

Apartment For Rent

Friday, 19 April 2024

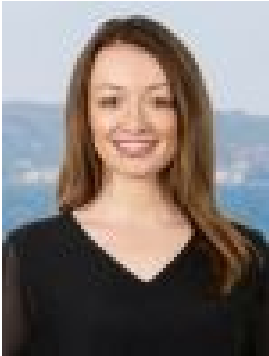
301/12-14 Grosvenor Street, Neutral Bay, NSW 2089

Bedrooms: 3

Bathrooms: 2

Parkings: 2

Type: Apartment



Jessica GibsonClarke
0426733775

\$1,950 per week

Quick Facts
Inspection Time: Sat 20 Apr 12:25 PM - 12:45 PM
Available: 11th May 2024
Application: Apply online at: snug.com/apply/raywhitelowernorthshore
Lease Period: 12 Months preferred
Pets: Not permitted
Parking: x2 secure car spaces plus storage
Positioned on the top floor of the near new and thoughtfully created 'Bala', this penthouse apartment strikes the optimum balance between holistic modern comfort and leafy urban convenience. Harmoniously set in the heart of Neutral Bay, enrich your senses and discover the undeniable attraction of this vibrant harbourside pocket. Footsteps from exciting eateries and local wine bars, enjoy a level short stroll to supermarkets and express city bus transport.

Accommodation

- Sleek and spacious open-plan living and dining, including wall mounted TV
- Premium kitchen featuring Calacatta stone benches, Miele gas cooktop, oven, microwave, integrated fridge, wine fridge & dishwasher
- 3 generous sized carpeted bedrooms with sleek storage and glazed sliding glass doors
- 2 bathroom sanctuaries featuring stone benchtop vanities, primary ensuite complete with a bathtub
- Large covered balcony, gas bayonet for BBQ, outdoor table and chairs included
- Internal laundry, including washing machine and dryer

Features

- Communal garden, barbeque area and tranquil activity zone along with level lift access from the secure basement parking
- Engineered timber flooring, ducted air-conditioning and video intercom
- 250m to Coles Neutral Bay, 150m to The Oaks, 300m to city bus routes

To apply for this property, please apply online at: snug.com/apply/raywhitelowernorthshore

FOR FURTHER INFORMATION PLEASE CONTACT: JESSICA GIBSON-CLARKE 0426 733 775

*All information contained herein is gathered from sources we consider to be reliable. However, we cannot guarantee its accuracy and interested persons should rely on their own enquiries. ** Photography and illustrations are for presentation purposes only and should be regarded as indicative representations only.