

**301/16 Shoreline Drive, Rhodes, NSW 2138**



**Apartment For Sale**

Saturday, 27 April 2024

301/16 Shoreline Drive, Rhodes, NSW 2138

**Bedrooms: 2**

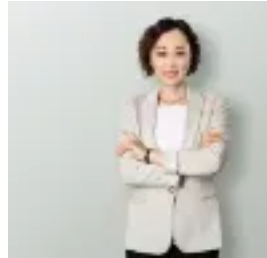
**Bathrooms: 2**

**Parkings: 1**

**Type: Apartment**



Sophia Zhou  
0293166125



Angelina SUN  
0293166125

## Contact Agent

This is an exciting opportunity to acquire your perfect dream home, with this oversized corner apartment set right on the Water's Edge, boasting panoramic water, parkland views and quality inclusions. Situated at the corner position and highest floor of the block, this home offers great privacy in this low-density MIRVAC building. The result is a truly exceptional sanctuary that's perfect for a luxury lifestyle just moments away from shopping centre, cafes and transport. It really is that simple! Featuring the absolute waterfront aspect, this contemporary penthouse offers 270-degree panoramic never-to-be-obstructed water views. The rare wrap-around large balcony design seamlessly integrates indoor and outdoor living for the ultimate relaxation and entertainment experience. We Know You Will Love:- Mirvac Built, low strata, great quality building- Good quality laminated floorboard- Large balcony with water views - Corner Block with plenty of natural sunlight- Low-density building- Spacious living: 127m<sup>2</sup> on title & 110m<sup>2</sup> living areas- Two gorgeous sized bedroom, both with built-in wardrobes, main with ensuite- Separate study area and masses of storage- Gourmet well-appointed Caesar Stone kitchen & modern design with Smeg appliances- Ducted air conditioning- Security lift access - Car space plus storage cage in basement- Enjoy a premier location that's walking distance to the train station (6min walk) and two major shopping centres (4min to Rhodes Central) with Parkside amenities Total size: 127m<sup>2</sup> (Approx) on title Strata Levy: \$1,200 per quarter (Approx) Council Rate: \$330.00 per quarter (Approx) Water Rate: \$173.00 per quarter (Approx)