

**302/15 Bowes Street, Phillip, ACT 2606**



**Apartment For Sale**

Monday, 14 August 2023

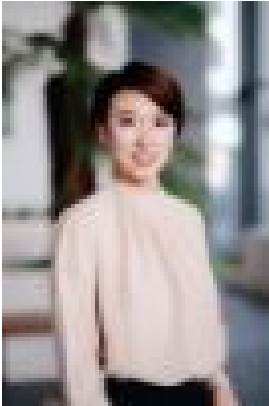
302/15 Bowes Street, Phillip, ACT 2606

**Bedrooms: 1**

**Bathrooms: 1**

**Parkings: 1**

**Type: Apartment**



Ming Sun

0481368613

**Sell with lease \$440,000.00+**

Positioned in the geographical heart of Canberra, Grand Central Towers is surrounded by endless amenity puts you close to everything, and everywhere. Towering over the heart of the Woden Town Centre, Grand Central Towers is just a stone's throw away from Westfield Shopping centre, Police Station and Parliament House triangle. Government is also investing in the area's growth, with the development of the light rail, the extension of the hospital and by moving CIT's city campus to Woden. Maximising space with 66 m2 was front of mind when configuring the one bedroom and one study with wardrobe layout to ensure that no space was wasted. The colour palette throughout is deliberately neutral, with the use of soft hues and natural materials, a blank canvas to make your own. For those seeking even more room or extra rental income, you will love the extra study/bedroom. Premium inclusions are standard at Grand Central Tower and this apartment is no exception. The apartment contains Smeg appliances, stone bench-tops and full size laundry. Full-height double glazed windows frame the outside world providing ample light and peace and quiet. The rooftop retreat located at level 5 with reflection pond -- resident infinity pool, gym, dining room, lounge and secure resident parking, car wash and bike workshop. Secure this north facing apartment today and be a part of becoming the most desirable town centre in Canberra. Features: • 58m2 Living & 8m2 Balcony • one bedroom and one study with wardrobe layout • 3rd floor north facing • stone benchtops • Smeg kitchen appliances-Brand new • Canberra landmark view • Secured and next door car parking and storage • Bus interchange and future major light rail stop at your doorstep • Leafy stroll to Westfield, Woolworth's, Chemists, cafes, bars and restaurants Vedio link

<https://www.dropbox.com/s/9jgpv51ooxa9mrl/Video.mp4?dl=0> Rates Approx: \$543.57/QTR Strata Approx: \$354.20/QTR Rental Approx: \$580-600/ week

Woden Grand Central Tower

Woden Smeg

66 Smeg