

**3028/33 Remora Road, Hamilton, Qld 4007**

**Sold Apartment**

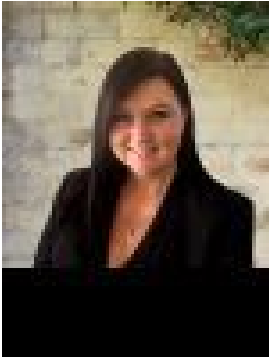
Wednesday, 17 April 2024

3028/33 Remora Road, Hamilton, Qld 4007

**Bedrooms: 1**

**Bathrooms: 1**

**Type: Apartment**



Melinda Allamby  
0733971885



Jade Allamby  
0421637244

**\$500,000**

Located in the riverside residential suburb of Hamilton, Finnegan Residences offers convenience living, with fabulous restaurants and cafes only minutes away. Creative floorplans maximise space and views, where décor is both classic and cosmopolitan. Open and airy kitchens come complete with Miele gas appliances, stone benchtops and a breakfast bar to facilitate casual dining. Oversized master bedroom and lush carpets provide a sense of indulgence, which continues through to well-appointed bathroom. Outside, residents can enjoy Queensland's famous indoor/outdoor living on expansive balconies, complete with ceramic tiles and frameless glass balustrades. Residents of Finnegan Residences want more than just a place to live. They want a place to engage and connect with the city. Finnegan Residences delivers this lifestyle, reimagined. A wide range of dining options are only a walk away, including Brisbane's famous Eat Street Markets – where hundreds of food and entertainment vendors bring the foreshore to life every weekend. For a quieter scene, Hamilton Recreation Reserve opposite The Hamilton provides fitness and recreation areas, picnic areas, junior playground, fig garden, village green and dog park. For something in between, the Dendy cinema is also a walk away, together with a handful of retail, dining, café and bar options. In addition to this eclectic hub and the exclusive residential amenity of The Hamilton, everything Queensland's stunning 'river city' has to offer is right on hand. Finnegan Residences is only 6kms to Brisbane CBD, and 9kms to Brisbane Domestic and International Airports. All aspects of public transport are within close proximity, including buses, trains and the CityCat ferry. CityCat services run from Northshore Hamilton ferry terminal to Brisbane CBD every 15 minutes. Residents can also use the nearby Gateway Motorway to connect to the Gold Coast (80kms away) and the Sunshine Coast. As much care and planning has been taken outside as it has inside. Poinciana trees decorate The Hamilton's streetscape and these inviting tones are continued throughout the residents' amenities. Residents of Finnegan Residences will be granted access to all amenities across The Hamilton development including 2 x 20 metre infinity pools with wheelchair access, an additional outdoor leisure pool and indoor heated pool. Residents will also have access to the entire suite of The Hamilton amenities, including: 4 Pools, 4 Gyms, 3 Common Rooms, Libraries, BBQ & Recreational Area Sundecks