

**303/6B Atkinson Street, Liverpool, NSW 2170**



**Sold Apartment**

Friday, 29 March 2024

303/6B Atkinson Street, Liverpool, NSW 2170

**Bedrooms: 2**

**Bathrooms: 2**

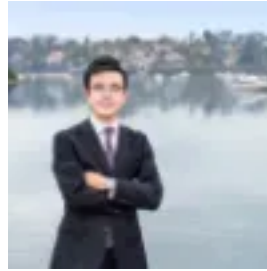
**Parkings: 1**

**Area: 147 m2**

**Type: Apartment**



Angell Yang  
0434259336



Kalaney Che  
0422273658

**\$580,000**

Situated on the low rise Building B at the prestige Paper Mill , this immaculate 2 Bedroom+ Study offers luxury and privacy. The North and East facing aspect also offers the morning sun and abundance of natural light. Overlooking the waterfront river view from your spacious corner balcony, enjoy the water view to start your day. The study nook with massive bookshelves is perfect for "Work From Home" lifestyle. This modern & luxurious finishes apartment includes engineered floating timber flooring, an eye-catching kitchen with quality stone benches and sliding door leading to the balcony, a large pantry, glass splashback, Delonghi integrated dishwasher and "Delonghi" stainless steel gas appliances. The stylish bathroom includes designer free standing bathtub, porcelain floor & ceramic wall tiles, a frameless shower screen & wall-mounted vanity. The Paper Mill, with its connection to parklands and the river combined with its authentic heritage, will be a benchmark for urban design in Western Sydney - but in a way that is family-orientated, life-affirming and dynamic. Only moments away from Liverpool CBD, local restaurants, cafes, boardwalks, schools, TAFE, Liverpool Hospital, Westfields shopping centre, Liverpool Plaza & within walking distance to Liverpool Train Station. Features: • Designed by International Award-Winning Architect, [www.woodsbagot.com](http://www.woodsbagot.com) • North and East corner with no other unit next door, the best floorplan in this building • Full of natural sunlight and airflow from the river side, • Oversized entertaining balcony connected to the kitchen, living, dining and bedroom areas. • Spacious open-plan family Living & Dining, 132 sqm living area • Main bedroom with Ensuite & two wardrobes • Sleek kitchen with gas cooktops, quality stone bench tops & fully integrated dishwasher • AC & LED lights • Modern-design contemporary bathrooms, main bathroom has free standing bathtub • Video security intercom & lift access • Private residents' podium and gardens • Security car space with lift access • Total area 147 sqm