

303A/84 Gordon Crescent, Lane Cove, NSW 2066

Raine&Horne.

Apartment For Sale

Friday, 3 May 2024

303A/84 Gordon Crescent, Lane Cove, NSW 2066

Bedrooms: 1

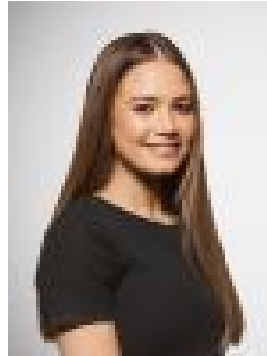
Bathrooms: 1

Parkings: 1

Type: Apartment



Oscar Nicholls
0283187888



Mackenzie Haines
0283187888

Auction - Contact Agent

Positioned in the esteemed 'Arcadia' complex, where the allure of nature converges with exceptional design, this one-bedroom residence embodies the pinnacle of upscale apartment living. Crafted by industry-leading architects DASCO, its coveted address presents a rare opportunity for homebuyers who demand the best. Impeccably appointed, generously proportioned, and basking in a sun-kissed northerly orientation, every aspect of this apartment exudes excellence. Seamlessly integrating state-of-the-art smart home automation with a palatial floor plan tailored for seamless entertaining, catch up with friends at the Sky Garden on level 6 or find solace on the rooftop terrace with unparalleled views overlooking Batten Reserve. Just steps away from Mowbray Road city buses and a stone's throw from the vibrant village precinct, it's perfectly placed for busy commuter lifestyles. - Expansive one-bedroom apartment showcasing unparalleled luxury- Versatile living/dining area with the option of a large home office/studio space- Filled with sunlight and designed to maximise its prime due-north aspect- State-of-the-art CaesarStone kitchen equipped with a suite of European appliances- Blum pull-out cabinetry, semi-integrated dishwasher and touch-control pantry- Waterfall island, integrated microwave and premium polyurethane cabinets- Luxury travertine pavers, recessed high ceilings and fluid open spaces- Banks of glass flow to a vast sundrenched terrace for alfresco entertaining- North-facing bedroom, deluxe travertine bathroom and a European laundry- Smart zoned ducted air conditioning, motorised blinds and smart-lock entry- Communal workspaces and function room, two rooftop gardens, BBQ area and playground- Video intercom, lift access, security parking and a storage cage on-title- Footsteps to buses and well placed for Epping Road, Chatswood and city access- Stroll to cafés, local shops and only moments to Lane Cove's Canopy precinct
Strata: \$942/q (Approx.)
Water: \$192/q (Approx.)
Council: \$407/q (Approx.)