

303B/3 Timbrol Avenue, Rhodes, NSW 2138

Raine&Horne

Apartment For Rent

Saturday, 27 April 2024

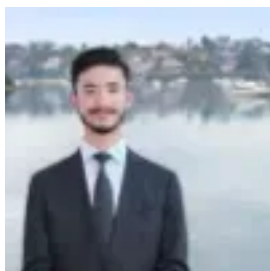
303B/3 Timbrol Avenue, Rhodes, NSW 2138

Bedrooms: 3

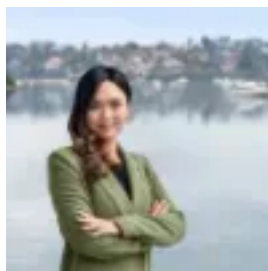
Bathrooms: 2

Parkings: 2

Type: Apartment



Max Perederienko
0290004488



Evonne Chao
0291896702

\$1,500 per week

Perfectly positioned at the waters edge of Crown Group's luxury waterfront resort 'Sanctum', this expansive luxury apartment boasts undisturbed 270° panoramic water views flowing through a private timber decked balcony wrapping around the entire lounge area with a north facing aspect. Offering a true easy move in and living this apartment is fully furnished with designer quality fittings from TV & Couch in the lounge to fridge in the kitchen & two bedroom furnishings with bedframes & mattresses. This three-bedroom penthouse style apartment with study has 126sqm of internal space plus an enormous 61sqm decked entertainment balcony. Features: • King sized bedrooms with built in wardrobes • Bespoke European designer open plan kitchen with stainless steel appliances Incl. gas stovetop, oven, rangehood & dishwasher • Enormous Lounge/dining area with direct water views • Direct flow through access onto large decked balcony from lounge • Dimmable downlights throughout • Jacuzzi with relaxing waterjets in ensuite • Japanese smart toilet-bidet hybrids • Heated towel rails in bathrooms • Full ceiling height folding French doors open up to the beautiful timber decking outdoor • Well-equipped gym, security intercom & designer foyer and garden with tranquil rooftop pool near garden • Zoned centralised ducted air conditioning • Two secure basement car spaces with intercom access • Only moments' walk to Rhodes train station, Rhodes Central shopping centre & Rhodes Waterside Shopping Centre • Easy access to waterfront parklands of the Rhodes Peninsula, Wentworth Point and Homebush Bay Don't wait to call our friendly team now to arrange an inspection. To apply for this property, please use this link:

<https://t-app.com.au/rhrhodes>(Disclaimer) The information shown is for illustration and marketing purposes only. Similar property but not be an exact representation of the property. Inspection is required to clarify the specification of the property.