

**304/138 Glen Eira Road, Elsternwick, Vic 3185**



**Sold Apartment**

Tuesday, 6 February 2024

304/138 Glen Eira Road, Elsternwick, Vic 3185

**Bedrooms: 2**

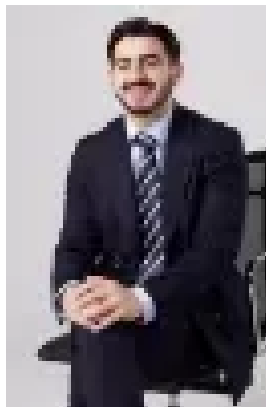
**Bathrooms: 2**

**Parkings: 2**

**Type: Apartment**



Dion Besser  
0395311000



Avi Kluwgant  
0431740347

## Contact agent

In the coveted 'Ripponlea Village' this sleek and sophisticated, light filled, two-bedroom, two-bathroom apartment reveals a spectacular panorama that highlights the city skyline and spans all the way to the waters of Port Phillip Bay. This 3rd floor apartment is a mix of lifestyle and luxury featuring a cohesive blend of a high end Asko kitchen with stone benches, stainless steel appliances which define the well-proportioned spaces of the open plan which flows to an engaging living and dining area all opening onto an undercover alfresco balcony which further extends the entertaining elements whilst taking in the magnificent views. Added features include oak flooring, reverse cycle heating and air conditioning, generous robes in each bedroom, an abundance of storage, euro laundry, video intercom entry, dual lift access and the luxury of two secure basement car spaces plus storage cage. Ripponlea Grocer, cafes, bars and amazing restaurants at your doorstep. You will also enjoy the ability to wander through the beauty of Ripponlea Gardens, plus have Ripponlea Railway Station for easy city-commuting, the Classic Cinema is just around the corner and Glen Huntly Rd is also merely moments away.