

304/27 Chapman Street, Gymea, NSW 2227



Apartment For Sale

Monday, 22 April 2024

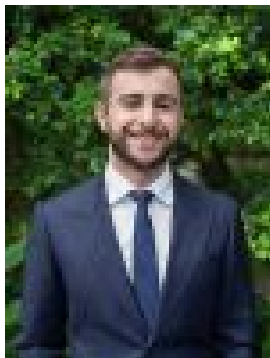
304/27 Chapman Street, Gymea, NSW 2227

Bedrooms: 2

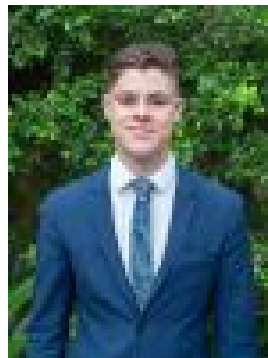
Bathrooms: 2

Parkings: 2

Type: Apartment



Marcus Salvatore
0433388862



William Hardwick
02 9525 8066

For Sale

Occupying a third-floor position in the highly renowned "Lily" complex, this low maintenance apartment presents the epitome of urban convenience and modern luxury. The meticulously crafted interior comprises of two generous bedrooms, two bathrooms, a fully equipped kitchen and an open plan living space adorned by natural light. Beyond the confines of this stylish abode lies a private north facing balcony and separate communal rooftop terrace designed to allow occupants to unwind or cater grand-scaled events.

- Living and dining area features ducted air conditioning and is fitted with clerestory windows, automated block out blinds and glass sliding doors opening to balcony
- Contemporary kitchen includes stone benchtops, splash back window that overlooks the outdoors and quality appliances throughout including a Smeg gas cooktop
- Two generous bedrooms fitted with high ceilings and mirrored built-in robes, master suite includes ensuite with floor to ceiling tiles and a frameless shower
- Ultra-modern main bathroom features floor to ceiling tiles, a shower-bath and a large mirrored shaving cabinet paired with recessed shelving and accent lighting
- European style laundry with ample alternate storage options available including a large storage cupboard that has been temporarily converted into a study nook
- Private north facing entertaining balcony with an abundance of natural light and cedar-slat privacy screening and glass balustrades
- Double lock up garage with auto door in secure basement + separate storage cage

• Approximate Lot Size: 126sqm (92sqm Unit + 30sqm Garage + 4sqm Storage Cage) Set in the heart of Gymea providing a gateway to local cafes, restaurants, Gymea Village, Gymea Station, St Catherine Labouré Catholic Primary School, Gymea Bay Public School and is also within the Port Hacking High School catchment.