

304/50 Catamaran Drive, Werribee South, Vic 3030



Unit For Sale

Tuesday, 28 May 2024

304/50 Catamaran Drive, Werribee South, Vic 3030

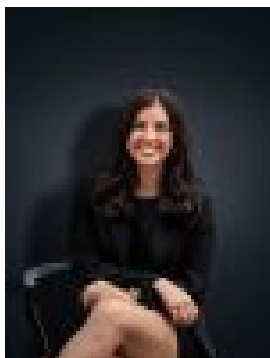
Bedrooms: 2

Bathrooms: 1

Parkings: 1

Area: 78 m2

Type: Unit



Kirsty Cunningham
0414344475



Stefanie Zahra
0397417777

\$395,000 - \$425,000

This is a true statement of coastal living in a superbly designed apartment located in the picture-perfect Wyndham Harbour, perfect for an easy-breezy lifestyle. Wyndham Harbour is a state-of-the-art Marina development located in Werribee South, in an ideal location that is just 30 minutes from Melbourne CBD, less than 45 minutes to Geelong and a short 15 minute drive to Werribee CBD and train station. Nestled in a vibrant community you have cafés and restaurants on your door stop, Werribee South General Store and local shops nearby, along with easy access to renowned tourist attractions, including the Werribee Open Range Zoo, the historic Werribee Mansion, and the acclaimed Shadowfax Winery. With views of Port Phillip Bay, this luxurious apartment offers the next lucky owners: • An open plan, light and bright living/dining/kitchen space with access to a large balcony overlooking a beautifully landscaped garden and shared entertaining area • Floor to ceiling windows bringing in ample natural light and providing a stunning vista. • Two bedrooms both with built in robes. • Modern central bathroom with floor to ceiling tiles, bathtub and separate shower • Contemporary stainless steel kitchen appliances and dishwasher. • Split system heating and cooling. • Secure car park. • Access to tennis courts and gym located in the Wyndham Harbour Estate. (PHOTO ID REQUIRED AT OPEN FOR INSPECTION) At YPA Estate Agents 'our service will move you