

**306/36 Lynch Street, Hawthorn, Vic 3122**



**Apartment For Rent**

Friday, 17 May 2024

306/36 Lynch Street, Hawthorn, Vic 3122

**Bedrooms: 1**

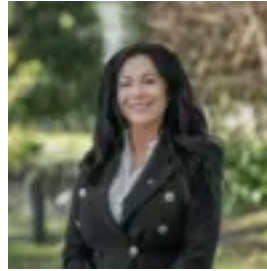
**Bathrooms: 1**

**Parkings: 1**

**Type: Apartment**



Yiotis Christodoulou  
0394283333



Elina Fry  
0394283333

**\$525 per week**

This stylish and low maintenance one bedroom apartment has everything you need, all enviably located within a sought-after area of Hawthorn in the Riva complex. Featuring a modern and well-equipped kitchen with quality Bosch appliances, gas cooktop, oven, dishwasher, an integrated fridge, and ample cupboard space, which seamlessly flows out into the open plan dining and living area with split system heating and cooling, and access to the balcony, perfect for alfresco dining or entertaining. Offering the main bedroom with mirrored built-in robes, serviced by the tiled and centrally located bathroom with a large walk-in shower. Superbly appointed with secure basement parking for one car, storage cage, intercom entry, study nook, and European laundry. Perfectly situated within moments from Swinburne University, University of Melbourne Burnley Campus, Hawthorn Station, Yarra River trails, Glenferrie Oval, and Glenferrie Road's array of boutique shops and eateries. Inspecting is a must! Would you like to Inspect this property? To select your preferred inspection time click the "Book Inspection" button and enter your details and we will respond instantly! Alternatively, visit the property advertisement on [www.jelliscraig.com.au](http://www.jelliscraig.com.au) and click Book Inspection.