

307/110 Keilor Road, Essendon North, Vic 3041

Sold Apartment

Monday, 13 May 2024

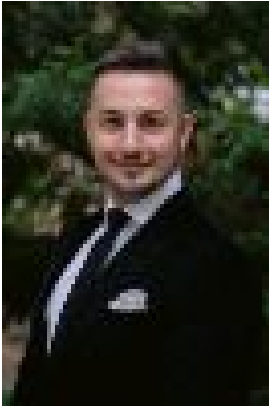
307/110 Keilor Road, Essendon North, Vic 3041

Bedrooms: 1

Bathrooms: 1

Parkings: 1

Type: Apartment



Reece McKechnie
0487408771



Ray Mirza
0409557788

\$330,000

Situated within the coveted Mink Apartments, proudly presenting a bright and spacious 1-bedroom + study apartment, in an ultra-convenient location embodying village lifestyle, ideal for first home buyers, downsizers and astute investors. Perched in an elevated position on the third floor and set atop beautiful timber flooring, the home begins with a bright open-plan living and dining zone with feature track lighting, seamlessly opening to an undercover terrace, perfect for alfresco dining and waking up over morning coffee. For those working from home or studying, a dedicated study nook will inspire boundless productivity. Superbly appointed, the galley-style kitchen showcases quality stainless steel Smeg appliances, including gas cooktop, under-bench oven and dishwasher, beautifully complemented by white finger tiles, easy to wipe down surfaces, and an abundance of storage throughout. Light-filled by day and dark at night for maximum rest and rejuvenation, thanks to blackout roller blinds, the expansive master bedroom enjoys plush carpet underfoot, built-in robe and direct access to both the central bathroom and terrace. Drawing inspiration from hotels, the sparkling bathroom boasts a frameless glass shower with rainwater head, floating vanity with storage, and a sleek toilet, creating a space that balances getting ready for the day with unwinding at the end of the week. Other features include a secure basement carpark, storage cage, and reverse-cycle split system heating and cooling for year-round comfort. Perfectly positioned, Mink's ground floor retail precinct includes professional services and eateries, with most notable being 400 Gradi, plus three bus routes and the 59 tram at the doorstep. A short stroll into North Essendon Village broadens access to cafes, restaurants, Coles, specialty shops, and services. Located only minutes from the entrance to the Calder Freeway, Tullamarine Freeway and Citylink, providing ease of access across Melbourne, to the city, airport, and onto regional Victoria.