

**30A Alex Avenue, Schofields, NSW 2762**

**Sold House**

Friday, 3 November 2023

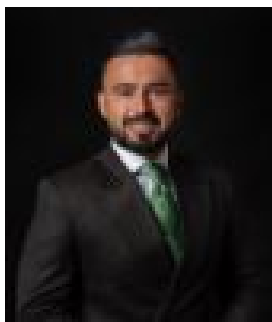
30A Alex Avenue, Schofields, NSW 2762

**Bedrooms: 4**

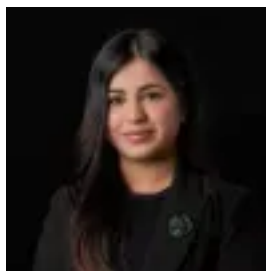
**Bathrooms: 2**

**Parkings: 1**

**Type: House**



Amit Kumar  
0288964336



Siya Sachdeva  
0288964336

**\$1,120,000**

Located within one of the most highly sought-after locations in Schofields this near-new family home is complete with high-quality fittings and finishes and is designed for a high-quality family lifestyle. The home boasts both functionality and style and exemplifies modern living with a seamless blend of indoor-outdoor entertaining areas for the family to enjoy. The versatile home offers an open plan layout with natural light that floods the kitchen, dining and living areas with seamless flow out to the glass sliding doors of the undercover alfresco and backyard. Not to mention an additional living space ensuring plenty of space for the family and entertainment. The well-appointed kitchen features quality stainless steel appliances, stone benchtops, a five-burner gas cooktop, a 900mm oven, an island benchtop, a dishwasher, an eat-in breakfast bar and plenty of storage space to enhance your cooking experience. The accommodation consists of four great-sized bedrooms, three of which with their built-in robes. The master bedroom showcases its walk-in wardrobe and private ensuite bathroom. Both bathrooms feature modern finishes stone benchtops and storage space. Features you should know:- LED and stylish lights throughout the home- Ducted air conditioning- Floorboards both upstairs and downstairs- Sitting area upstairs to enjoy your favourite book- Low maintenance and fully fenced backyard perfect for the children to play- Single remote-controlled lock-up garage with internal access- Solar panels installed Location Highlights:- 3 minutes drive to premium Galungara Public School- 7 minutes walk to the Beacon Park - Moments walk to bus stops- 3 minutes drive to Schofields Train Station and Schofields Village Shopping Centre- 5 minutes drive to Tallawong Metro Station- Short walk to multiple childcare centres and medicare centres on Alex Avenue Disclaimer: All information contained herein is obtained from property owners or third-party sources which we believe are reliable. We have no reason to doubt its accuracy, however, we cannot guarantee it. All interested person/s should rely on their enquiries.