

**31/341 Bowen Terrace, New Farm, Qld 4005**



**Unit For Rent**

Wednesday, 12 June 2024

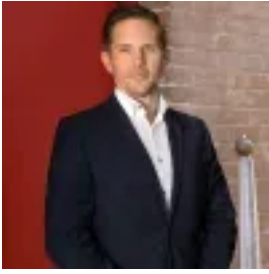
31/341 Bowen Terrace, New Farm, Qld 4005

**Bedrooms: 3**

**Bathrooms: 2**

**Parkings: 1**

**Type: Unit**



Ryan Greer  
0736381400

**\$880 pw**

179Sqm of sophisticated apartment living nestled among one of Brisbane's most highly desired locations, with high elevation this property offers a sense of privacy and peaceful outlook over the Brisbane river, New Farm, Teneriffe Hill, Hamilton Hill and beyond. With floor to ceiling glass, the apartment oozes natural light and cool cross breezes. Within just a short of all the attractions of the fashionable James precinct, New Farm Park, Howard Smith Wharves Six Cinemas, Riverwalk, City Cat terminal and a wide selection of restaurants and eateries and high-end fashion boutiques.- Classic interiors throughout- Light filled sunroom overlooking New Farm through to Moreton Bay- Well-appointed full size gourmet kitchen with stainless steel appliances and breakfast bar- Separate living and dining areas, perfect for entertaining- Three generously sized bedrooms with ceiling fans, built-in wardrobes and expansive views- 2 refurbished bathrooms with separate 2nd toilet- Internal Laundry with balcony access- Air conditioning fitting throughout the living areas- Extensive built-in cabinetry/storage throughout- One secure car space- Pets considered upon application