

31 Abingdon Road, Roseville, NSW 2069



House For Sale

Friday, 1 March 2024

31 Abingdon Road, Roseville, NSW 2069

Bedrooms: 3

Bathrooms: 1

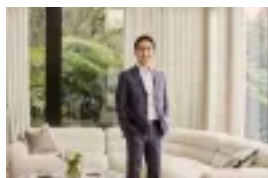
Parkings: 2

Area: 738 m2

Type: House



Adam Wong
0299086099



Nathan Zhuang
0425517888

Auction - Contact Agent

Positioned on the high side of the street in a peaceful family enclave, this light-filled double-brick home with private alfresco entertaining promise a relaxing lifestyle that's hard to beat. A flawless display of mid-century charm fused with contemporary updates has created a wonderful family home for young families, empty nesters and those looking for an easy peaceful lifestyle. Set in a non-heritage conservation area, this home occupies an expansive 738sqm block with wide 17.1m frontage, providing fantastic potential to extend or build your dream home (STCA). The sought-after leafy setting enjoys bus services to the Chatswood Station, Lindfield Village and Macquarie at your doorsteps, and is a short stroll to the popular Lindfield Learning Village School and Loyal Henry Park. Easy access to Roseville village for a mix of cafés, boutique shops and restaurants. It's also close to Lindfield Public, Roseville College, North Shore private schools and Chatswood's world-class shopping and dining.- Quiet family friendly street, high-side, no heritage or conservation restrictions- Sun-filled lounge room with fireplace and A/C flows to adjoining dining room- Renovated contemporary stone-topped gas kitchen with quality appliances and ample storage- Landscaped sun-soaked backyard with alfresco terrace and tiered-gardens perfect for entertaining - Three bedrooms all with built-in robe, polished timber floorboards, high ceilings- Modern full bathroom with bath and separate shower, underfloor heating, internal laundry- Lock-up garage, oversized carport and off-street parking- Bus in street offering direct access to Chatswood, Lindfield Learning Village and Macquarie Uni.