

31 Dudley Street, Mermaid Beach, Qld 4218



Sold House

Saturday, 28 October 2023

31 Dudley Street, Mermaid Beach, Qld 4218

Bedrooms: 4

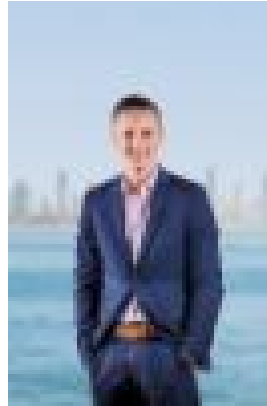
Bathrooms: 3

Parkings: 2

Type: House



Mitch Palmer
0755922706



Bailey Collie
0755922706

\$2,855,000

Experience the ultimate in coastal sophistication in this stunning double-storey modern home, enviably situated footsteps from the sand in one of the Gold Coast's most sought after suburbs. This substantial contemporary masterpiece is designed to maximise the natural light and ocean breezes, offering a North-facing backyard that captures the warmth of the sun all year round. This impeccable home boasts a spacious open-plan design that seamlessly integrates indoor and outdoor living. The ground floor houses a state-of-the-art kitchen equipped with European appliances and a large island bench. The expansive living and dining area flows out to a private, alfresco entertaining space, complete with a pool amongst manicured garden surrounds. Upstairs, you will find another living space, just perfect for the kids along with a further 3 bedrooms, the master being a true retreat with its deluxe ensuite, huge walk-in robe, and Northern balcony. Private and secure, this family residence offers everything you could need in a location very few get to call home. Just a short walk to renowned restaurants, boutique shops and pristine surf beaches in the heart of one of Australia's most premiere locations. Don't let this rare offering pass you by - your beachside paradise awaits. Disclaimer: This property is being sold by auction or without a price and therefore a price guide cannot be provided. The website may have filtered the property into a price bracket for website functionality purposes. We have in preparing this information used our best endeavours to ensure that the information contained herein is true and accurate, but accept no responsibility and disclaim all liability in respect of any errors, omissions, inaccuracies or misstatements that may occur. Prospective purchasers should make their own enquiries to verify the information contained herein. * denotes approximate measurements