

31 Hall Avenue, Altona Meadows, Vic 3028



Sold House

Friday, 22 March 2024

31 Hall Avenue, Altona Meadows, Vic 3028

Bedrooms: 3

Bathrooms: 1

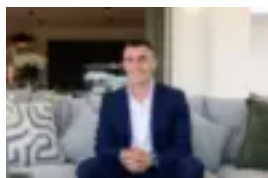
Parkings: 3

Area: 487 m2

Type: House



Alexander Deeb
0393959999



Michael Barbuto
0393959999

\$735,000

A north-facing piece of elegance; this home is the perfect option for anyone looking for a stress-free relocation. Ideally located across the road from expansive parklands, this home is within close proximity to freeway access points, Laverton Train Station, Central Square shopping centre, Altona Meadows Primary School, Alma Avenue local shops, Victoria Street local shops and much more. Beautifully modernised, this fantastic turn-key residence offers quality entertaining zones and thoughtful sleeping quarters, comprising the below:

- Two quality entertaining zones including one dining area and separate living / formal dining zone.
- Overlooking renovated kitchen with built-in pantry, ample storage options including overhead storage, quality appliances, tiled splash back and stone bench tops with coffee station.
- Enclosed pergola and outdoor BBQ area flowing into the expansive rear garden, great for entertaining family or friends.
- Three expansive bedrooms; one master with built in wardrobe, and two bedrooms (one with built-in robes), centralised by the main bathroom and separate shower, which can easily be converted into a second bathroom.

Additional features in this home are abundant and include: heating and cooling, newly installed split system, upgraded venetian blinds, enclosed workshop, clothesline, landscaped front and rear gardens with side gate access, as well as a three-car carport (two spaces are enclosed by gate). This is a fantastic home in an even better position. Don't wait too long to secure this opportunity. Contact Alex on 0425 065 195 today to arrange your viewing. **Whilst every precaution has been made to establish the accuracy of this information, land and build dimensions are approximate. In order to satisfy yourself of the exact dimensions of each room and the premises generally, we advise you to conduct your own measurements and/or engage the services of a qualified surveyor**