

31 James Milne Drive, Croydon North, Vic 3136



Sold House

Wednesday, 20 September 2023

31 James Milne Drive, Croydon North, Vic 3136

Bedrooms: 4

Bathrooms: 2

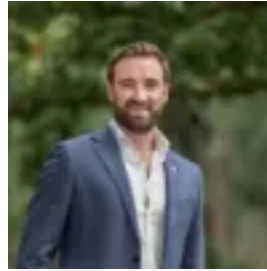
Parkings: 2

Area: 668 m2

Type: House



Erin McDougall
0398706211



Daniel Broadbent
0398706211

\$1,071,000

Enviably positioned in a peaceful cul-de-sac mere metres from leafy Tadji Close Reserve parkland, this generous single level brick home is poised high above the street amidst colourful established gardens. Situated within walking distance of Croydon Hills Primary School and Yarrunga Reserve walking trails, the home is also just moments from Yarra Valley Grammar, Luther College, Croydon Station, McAdam Square and Chirnside Park Shopping Centre. At the entry, visitors are greeted into an inviting formal living and dining room with ornamental ceiling roses. The home also features a spacious separate family room, with each living space offering garden views via floor-to-ceiling windows. A generous backyard includes a paved dining terrace overlooking a manicured lawn framed by beautifully landscaped gardens, with four mature citrus trees, a pomegranate tree, colourful bulbs and herbs. A casual dining area is positioned alongside an expansive modern kitchen with thick gleaming granite benchtops, a stainless steel dishwasher, good inbuilt storage space, a breakfast bar, an integrated microwave and an electric wall oven. The oversized master bedroom features an elegant bay window, a large walk-in wardrobe and an airy private ensuite, while two additional robed bedrooms are complemented by a home office / fourth bedroom. The home also includes a central bathroom with separate bathtub, a separate W/C, and a full laundry with direct outdoor access. Featuring gas ducted heating, split system air conditioning, external shade blinds, a security screen front door and a lock-up garden shed, the home also includes a double carport plus ample additional off-street parking space.