

31 Pranjic Place, Rowville, Vic 3178



House For Sale

Tuesday, 19 March 2024

31 Pranjic Place, Rowville, Vic 3178

Bedrooms: 4

Bathrooms: 2

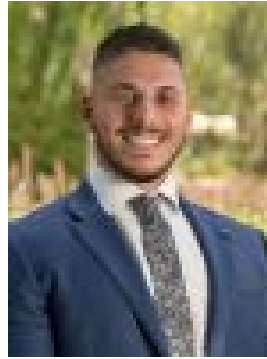
Parkings: 2

Area: 647 m2

Type: House



Syahmi Sarip
0401244372



Tim Milaki
0413336177

Auction (\$1,000,000 - \$1,100,000)

This delightful four-bedroom, two-bathroom home is the epitome of spacious family living. As you walk up the driveway, you will notice the two-car garage with rear roller door access, separate from the main house. The porch covers the walkway to the front door, which is lined by low-maintenance gardens. Once inside, to the left, a good-sized work-from-home space is situated, flooded with plenty of natural light, which is a recurring theme throughout the home. You are then greeted with the master bedroom, complete with a spacious walk-in robe and ensuite. The expansive living and dining space is the perfect location to catch up with family and friends, lined with fresh new carpet and complemented by the adjacent rumpus room where you can enjoy a game of pool with your mates. The heart of the home is the open-plan kitchen, meals and dining space, which can be separated from the main living area. The kitchen is complete with a large fridge space, gas cooktop, and electric oven. The family area overlooks the outdoor patio space, currently sheltered by a shade sail. Walking down the hallway, you will discover three bedrooms, all with built-in robes, a spacious oversized bathroom, laundry, and a separate WC for convenience. Outside, the backyard has ample space for kids or animals to play and is essentially a blank canvas for novice landscapers or renovators alike. Extra Features of the home include, Ducted heating, evaporation cooling both with new outlets, secure backyard access gate, street parking, and plenty of natural light. FEATURES: • Two car garage • 4 Bedrooms • 2 Bathrooms • Study • Rumpus • Living and dining • Open Plan Kitchen Meals Family • Shade sail • Oversized main bathroom and laundry • Master ensuite and walk-in robe • LED Downlights • Ducted Heating • Evaporation cooling • Curtains throughout • Gas Cooktop and Electric Oven • New Carpets throughout • Large yard • 647 Square meter block • Street Parking LOCATION: Conveniently located on the south side of Wellington Road, this property is close to Wellington Village shops and Stud Park Shopping Centre for all your shopping needs. Education is also very accessible with Heany Park Primary School, St Simons Primary school and Rowville Primary school all nearby for the little ones and Rowville Secondary College and St Joseph's college for your elder children. Dandenong Ranges are only minutes to enjoy the stunning treetops, or alternatively the M2 and M3 on ramps are conveniently just down the road for all other commutes. Onsite Auction Saturday 13th of April at 10:30am