

31 Sunflower Drive, Beveridge, Vic 3753

Residential Land For Sale

Tuesday, 9 April 2024



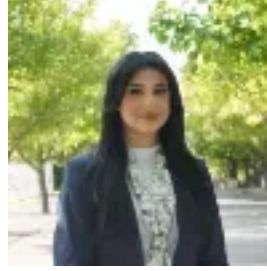
31 Sunflower Drive, Beveridge, Vic 3753

Area: 332 m2

Type: Residential Land



Steph Shepherdson
0393082277



Brandice Rizkalla
0393082277

\$299,000

This exceptional titled 332sqm in thriving Beveridge boasts a flat rectangular expanse with generous 31.6m x 10.5m dimensions. Ready to build on and offering an ideal blank canvas for your forever home, Beveridge is a haven for families featuring numerous parks, reserves, playgrounds, walking and biking trails. Moments from Beveridge Primary School plus a short commute to Donnybrook Primary School and Hume Anglican Grammar, the location will soon enjoy the benefits of major supermarkets, retail offerings, community facilities and other amenities that are all proposed for the area. With the freedom to craft a truly unique residence, don't let this opportunity slip through your fingers.