

310/70 River Road, Ermington, NSW 2115



Apartment For Rent

Tuesday, 14 May 2024

310/70 River Road, Ermington, NSW 2115

Bedrooms: 2

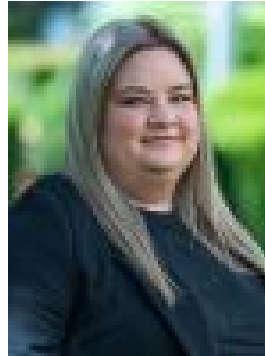
Bathrooms: 2

Parkings: 1

Type: Apartment



Zarin Hossain
0418328479



Nevena Petrovic
0428835910

\$750 per week

Located in the new urban hub of Royal Shores, San Marco offers lifestyle apartment living within the masterplanned community in Ermington. Perched on the waters edge, San Marco offers easy access to the river, cycleway and parks.

APARTMENT FEATURES- Reverse cycle air conditioning- Stainless steel kitchen appliances- Stone bench tops, mirror splash backs- LED under cupboard lighting- Wool blend carpets, efficient LED down lights- Data/TV points in living and main bedroom- Recessed mirrored cabinets in bathroom- Security building, video intercom

NEIGHBORHOOD FACILITIES- Woolworths, Liquorland, Bakery 900m away- Local bus routes (523, 524, 525 600m-1.5km away)- West Ryde Railway station 4.2kms away- Rydalmere Ferry Wharf 1.2 km away - Sydney Olympic Park 8.2kms away- George Kendall Park 500m away- Childcare 750m away- Cycle tracks connect surrounding area and parks - Scenic walkways connecting to Homebush