

312/138 Glen Eira Road, Elsternwick, Vic 3185



Apartment For Sale

Tuesday, 7 May 2024

312/138 Glen Eira Road, Elsternwick, Vic 3185

Bedrooms: 2

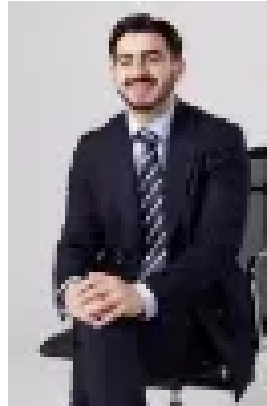
Bathrooms: 2

Parkings: 1

Type: Apartment



Dion Besser
0395311000



Avi Kluwgant
0431740347

\$680,000

This stunning 2 bedroom, 2 bathroom apartment is located on the third floor in the heart of Ripponlea Village. Greeted by a wide entrance hallway, leading to a well-proportioned open plan living/dining through to your entertainer's terrace enjoying tree top views through to Ripponlea Gardens. The kitchen features stainless steel Asko appliances, drawer style Fisher & Paykel dishwasher, mirrored splash back, pantry and additional storage space. The double bedrooms have generous built in robes, with sparkling ensuite and central bathroom. Further features include reverse cycle heating and air conditioning, European laundry, timber flooring throughout, secure video intercom entry, dual lift access, basement car park and storage cage. Ripponlea Grocer, cafes, bars and amazing restaurants at your doorstep and enjoying the ability to wander through the beauty of Ripponlea Gardens, plus have Ripponlea Railway Station for easy city-commuting, the Classic Cinema is just around the corner and Glen Huntly Rd also merely moments away