

32/144 Shingley Drive, Airlie Beach, Qld 4802



Unit For Sale

Thursday, 16 November 2023

32/144 Shingley Drive, Airlie Beach, Qld 4802

Bedrooms: 3

Bathrooms: 2

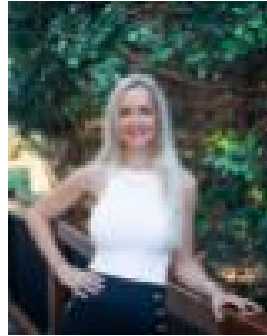
Parkings: 2

Area: 216 m2

Type: Unit



Stephanie McWhirter
0749488500



Clarice Davis
0749488500

Offers

Live at the intersection of elegance and coastal beauty in this exclusive apartment, gracefully situated on a lovely peninsula. This prestigious 216sqm floor plan residence offers panoramic views of the marina and Double Cone Islands, creating a daily masterpiece of natural wonders. You'll adore its sleek, modern design, highlighting the fully furnished interiors. With ducted air conditioning ensuring year-round comfort, this waterfront haven boasts a master bedroom with a walk-through robe to the ensuite, two additional bedrooms with built-ins and a study nook. Entertain on the covered balcony or in the gourmet kitchen with quality appliances and a large island bench with a breakfast bar. Two living spaces provide plenty of space to entertain, while the complex amenities include an undercover double tandem carpark with storage, lift facilities, a BBQ area and a sparkling swimming pool. Currently in holiday let, it's poised to become the home you'll love coming back to all year round.