

32/20 Moore Street, Turner, ACT 2612



Sold Apartment

Monday, 9 October 2023

32/20 Moore Street, Turner, ACT 2612

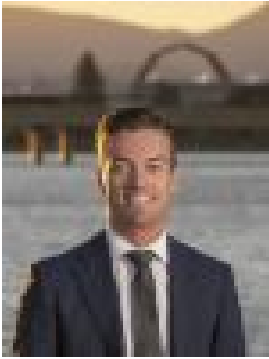
Bedrooms: 2

Bathrooms: 2

Parkings: 2

Area: 89 m2

Type: Apartment



Samuel Fitzsimmons

0400305041

\$675,000

Nestled within 'The Avenue' complex, this top-floor two-bedroom apartment offers a spacious retreat right at the heart of the city, treating you to sweeping panoramic views of the iconic Black Mountain Tower from its spacious balcony. This modern abode is designed to cater to all your contemporary needs, with an open-plan living area seamlessly extending onto the balcony, effectively blending indoor and outdoor living to let you relish the captivating views. The kitchen is a culinary haven, boasting stone benchtops, stainless steel appliances, and an abundance of storage. When it comes to location, this property is a true gem. Whether you prefer walking or cycling to work, shopping in the city centre on weekends, or savouring the diverse array of restaurants and cafes nearby, you're spoiled for choice. The Australian National University (ANU), the vibrant Braddon precinct, and the ever-popular Canberra Centre are all conveniently close. Plus, for those sweltering summer days, the complex offers a large central pool to cool off in and bbq areas. Currently rented until 24/11/2024 for \$670 per week. Features:

- Top floor apartment
- Unobstructed views to Telstra Tower and Black Mountain
- Open plan living and dining area
- Galley style kitchen with granite benchtops and stainless steel appliances
- Large master bedroom with ensuite and balcony
- Second bedroom with built-in-robe
- Covered balcony perfect for entertaining
- Bathrooms with floor-to-ceiling tiling
- European laundry
- Reverse cycle heating and cooling
- Centralised gas hot water
- Intercom and lift access
- Fob access to both complex entry and basement parking
- Two secure basement parking spaces and storage cage
- Landscaped communal courtyard with two pools and BBQ facilities

Stats: Living: 89m² Balcony 1: 8m² Balcony 2: 3m² EER: 6 Build: 2005 Body Corporate: \$7,045 pa Rates: \$1,800.07 pa Land Tax: \$2,165.39 pa

Please Note: Whilst all care has been taken by Ray White Canberra to ensure accuracy in the preparation of the particulars herein, no warranty or representation, express or implied, as to the accuracy or completeness of the particulars provided is made or given by us and interested parties must therefore rely on their own enquiries. Liability for any error, omission, negligence or misrepresentation is hereby excluded.