

32-34 Velma Grove, Ringwood East, Vic 3135



Sold House

Wednesday, 7 February 2024

32-34 Velma Grove, Ringwood East, Vic 3135

Bedrooms: 7

Bathrooms: 5

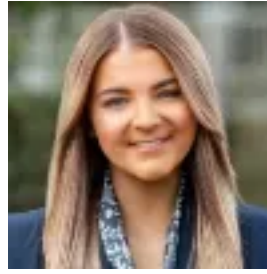
Parkings: 10

Area: 2801 m2

Type: House



Chris Watson
0398798827



Olivia Mackie
0398798827

\$2,740,000

OFFERING CLOSING ON WEDNESDAY 28TH FEBRUARY THE PROPERTY Rising to a new level of sophistication, this mesmerising seven-bedroom, five-bathroom luxury residence on an expansive 2,801sqm (approx.) offers a lifestyle dream to discerning families. Spread across three levels, this stunning home flaunts an abundance of versatile spaces perfectly suited to multigenerational living. Proudly resting on a huge 2801sqm approx. block, entertainers will delight in the multitude of spaces for relaxation, including a resort-style indoor pool, balcony with spectacular views and lavish alfresco complete with pizza oven. Stepping inside, the ground floor boasts a luxurious fireside living zone, a separate meals area and premium kitchen, home office, plus four bedrooms (one with ensuite) and the elegant family bathroom. Journeying upstairs you will discover a spacious retreat and two additional bedrooms, both with walk-in robe and ensuite, the main enjoying private access to the balcony. Further flexible space is available on the lower floor, with a living area complete with kitchen, plus an office, bedroom, bathroom, storage space and garage. With picture perfect gardens and sophisticated appointments throughout, this one-of-a-kind home is not to be missed.

THE FEATURES Luxury seven-bedroom, five-bathroom family residence Multiple living zones spanning across three levels Two first-floor bedrooms with WIR & luxe ensuite Five further bedrooms, three with BIRs, one with ensuite Stunning entertainer's alfresco with pizza oven Lavish resort style indoor pool for enjoyment year-round Immaculate landscaped 2801 sq m approx. garden block

THE LOCATION Perfectly positioned in a peaceful street, yet close to all you need, with Ringwood East station nearby, plenty of shopping destinations close at hand including Eastland, plus an array of sought-after schools in the area such as Ainslie Park Primary, Melba Secondary College and Tintern Grammar.