

32 Azalea Avenue, Mill Park, Vic 3082



House For Sale

Thursday, 1 February 2024

32 Azalea Avenue, Mill Park, Vic 3082

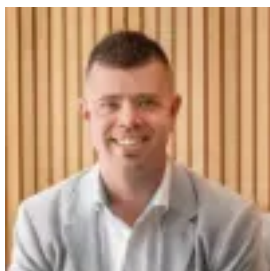
Bedrooms: 4

Bathrooms: 2

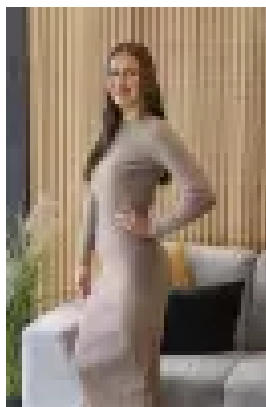
Parkings: 4

Area: 579 m2

Type: House



Jay Moxon
0391111707



Imogen Hammond
0391111707

ESR: \$895,000 - \$945,000

Situated perfectly within the esteemed Blossom Park Estate and just moments away from the lush landscape of Plenty Gorge, Westfield Plenty Valley, South Morang Train Station, Rivergum Village, RMIT, DFO Uni Hill, reputable schools and gorgeous parklands, this remarkable property presents an exciting opportunity for even the most fastidious of buyers. Comprising four spacious bedrooms, all fitted with built-in robes, ensuite to the master bedroom and a sizable central bathroom which services the other bedrooms. The well-designed, extra large kitchen features plenty of cabinetry and bench space, seamlessly flowing into the adjacent meals area. Upon entry, you'll be greeted by a large formal lounge with extra space for a study, playroom or work from home space, creating an inviting atmosphere. A secondary lounge at the rear of the property adds to the appeal and versatility of the layout and offers ample space for comfortable living. Step outside to be greeted by a fabulous pergola area featuring café blinds, perfect for all year-round entertaining. The generous yard showcases meticulously landscaped gardens and provides an ideal space for the whole family to play and pets to roam freely. Enhanced with a range of additional features which include ducted heating and evaporative cooling plus an additional split system for year-round comfort, sizable laundry, plantation shutters throughout the home, striking timber flooring, alarm system, security cameras, handy storage shed, double garage and convenient secure off-street parking. An inspection of this splendid property is sure to leave a lasting impression. Don't miss this fantastic opportunity!