

32 Lasseter Avenue, Chifley, NSW 2036



Sold House

Friday, 3 May 2024

32 Lasseter Avenue, Chifley, NSW 2036

Bedrooms: 4

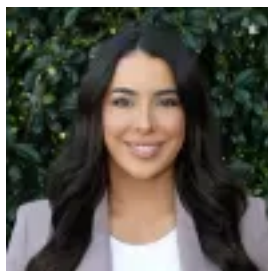
Bathrooms: 3

Parkings: 2

Type: House



Simon Nolan
0293707700



Annabel Lindsay
0293707700

Contact agent

Designed by leading architect firm EMK and built by Bondi Constructions this spacious and stylish home is at the high point of the street. Superbly designed with family living in mind it is brilliantly bright and airy with 3.6m living area ceilings. Appealing to families, professional couples and even to accommodate elderly parents with its considered layout.- Dual-level duplex offering multiple living spaces- Double height glass accentuates the living/dining area views- Four light filled bedrooms or potential fifth bedroom if desired- Elevated backyard featuring landscaped gardens and terrace- Brick and concrete slab construction, eye catching street appeal- Four light filled bedrooms or potential fifth bedroom if desired- 2km to Malabar beach and 1.5km to Little Bay beach- Opposite Dr. Walters park, lush outlooks from all main rooms- Expansive views over the sports reserve to Botany bay and beyond- Full separate study, downstairs bed and bath, single lock-up garage- Commanding street appeal on approx 313m land and 230m internal