

32 Lowe Drive, Doreen, Vic 3754

CHWYLA

Townhouse For Sale

Tuesday, 2 April 2024

32 Lowe Drive, Doreen, Vic 3754

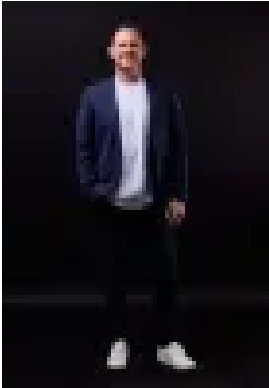
Bedrooms: 2

Bathrooms: 2

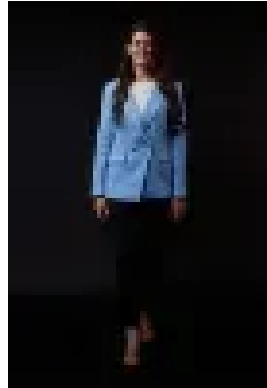
Parkings: 1

Area: 131 m2

Type: Townhouse



Paul Chwyla
0386009995



Stacy Richards
0386009995

\$470,000 - \$505,000

Make more of : ☑ Corner townhouse ☑ 131m² block ☑ Two bedrooms ☑ Two bathrooms with stone benchtops ☑ Powder room ☑ Open plan kitchen, living, dining area ☑ Study nook ☑ Garage with rear roller door ☑ Engineered boards ☑ Feature lighting ☑ Downlights ☑ Sheers ☑ Blinds ☑ 600mm appliances ☑ Dishwasher ☑ Bathroom with skylight ☑ Master with walk-in robe ☑ Second bedroom with built-in robes ☑ Linen storage ☑ Multiple split systems ☑ Covered alfresco with downlights ☑ Synthetic turf ☑ Low maintenance landscaping ☑ Water tank ☑ 220m to Bridge Inn Rd bus stop ☑ 500m to Cookes Road shops, Foodworks ☑ 700m to Towerhill Avenue Park ☑ 1.3km to Mernda train station ☑ 1.7km to Mernda Town Centre shops ☑ 2.6km to Laurimar shops ☑ The initial appeal – An open plan kitchen, living, dining space with a study nook and glass sliders into your covered alfresco, and a garage with a rear roller door into the courtyard. We love the feature lighting, dreamy sheers and grey tiles and a skylight in the bathroom. You'll also be a 7ish minute walk to the Cookes Road shops and Foodies. The main attraction – Low maintenance, Low stress living. Synthetic turf in your courtyard and a small front yard mean that you can spend the cooler months holidaying without worrying about returning to the Amazon Jungle. It's time to take it back a gear [or two]. Your journey here starts this Saturday.