

**32 Matilda Road, Moorabbin, Vic 3189**

**buxton**

**Sold Townhouse**

Thursday, 29 February 2024

32 Matilda Road, Moorabbin, Vic 3189

**Bedrooms: 4**

**Bathrooms: 2**

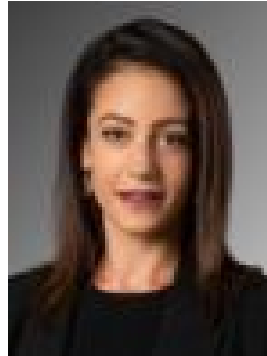
**Parkings: 2**

**Area: 353 m2**

**Type: Townhouse**



Paul Sibley  
0395550622



Natalie Falvo  
0421981447

**\$1,515,000**

Stand out with bold presence, big accommodation and a standalone town residence on a corner. Combining standalone presence and outstanding quality, this high-impact up to four-bedroom, 2.5-bathroom town residence is adaptable by design with living and dining wrapping a north-facing entertainers' deck, large first-floor lounge flowing to a sunset-view balcony-terrace, and ground-floor home-office - big enough to double as a 4th bedroom or quiet sitting-room. Shining with a Smeg appliance and mirror splashback kitchen at the heart of ground-floor living and designer bathrooms including a dual-vanity ensuite up above, this impressive home stars luxe stone and timber finishes, privacy-enhancing plantation-shutters, and a gorgeous gas-fireplace. Climate controlled and alarmed with an abundance of storage (walk-in, built-in and understairs), the home even offers abundant space outdoors in well-utilised approx. 353sqm corner grounds with a generous double auto garage from Bulli St and wraparound gardens on three sides. Located for family life just around the corner from Southmoor Primary School and 500m to St Catherine's Primary School, this impressive home has Bricker Reserve within a run, RSEA Reserve within a kick, and the Morris Moor Precinct, Moorabbin retail and rail hub within a minute. For more information about this eye-catching corner home contact Paul Sibley at Buxton Hampton East on 0403 325 423