

32 Minerva Crescent, Croydon Park, SA 5008



Sold House

Friday, 15 March 2024

32 Minerva Crescent, Croydon Park, SA 5008

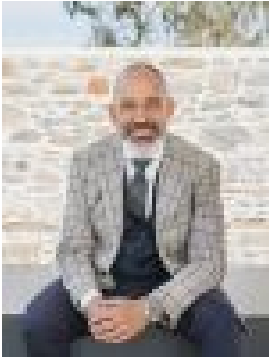
Bedrooms: 3

Bathrooms: 1

Parkings: 6

Area: 704 m2

Type: House



Peter Kikianis
0882424777

\$1,016,000

PLEASE NOTE NEW AUCTION DATE WEDNESDAY 3RD OF APRIL @6PM Built in the mid 60's this solid brick basket stone home offers untapped potential to any astute buyer wanting to get into this booming suburb. This home has been in the ownership of the same family since it was built, it offers an abundance of fruit trees and plenty of space for the growing family. A flexible floor plan with three bedrooms, a large lounge overlooking the leafy front garden and an updated kitchen complete the package. Croydon Park is located only 7 kilometres from Adelaide CBD, making this a prime location to invest. Other features include timber boards, ducted air conditioning, roller shutters, art décor style bathroom, plenty of secure off street carparking and much more. Sited on a large corner allotment of approximately 704 sqm, this property may offer an astute investor the potential to subdivide a second allotment (subject to planning consents). Located close to transport, local Shopping centre, centrally located to the beach and city makes this the best real estate investment you can buy in today's market. Please register your interest today. *Measurements are approximate**All information provided has been obtained from sources deemed to be reliable; however, we cannot guarantee the information is accurate and the vendor and the agent do not accept any responsibility or liability for any errors or omissions. Interested parties should conduct their own independent enquiries & advice regarding the property****The Form 1 - Vendor's statement may be inspected at Ray White Semaphore 1 Military Road, Semaphore South for 3 consecutive business days prior to the auction, and at the auction, 30 minutes before it starts**