

32 Pfitzner Close, Murray Bridge, SA 5253

House For Sale

Thursday, 9 May 2024



32 Pfitzner Close, Murray Bridge, SA 5253

Bedrooms: 4

Bathrooms: 2

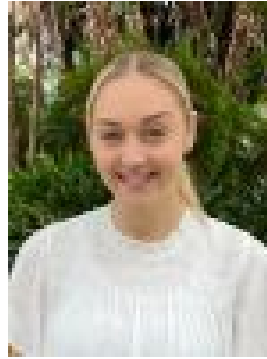
Parkings: 2

Area: 455 m2

Type: House



Donna Ytsma
0417880371



Sahara Angove
0885326833

\$430,000

Viewing by open inspections only | Friday 10th May: 4pm-4:45pm & Monday 13th May: 4pm-4:45pm This 4-bedroom home is situated on a 455m² allotment, with low maintenance yards and walking distance to schools, doctors, shops and a chemist. The master bedroom has an en-suite and walk-in robe, while all other bedrooms have built-in wardrobes and are situated close to the main bathroom, with separate toilet. The open plan kitchen, living and dining area has plenty of natural light and opens onto the undercover outdoor entertaining area. Features: • Double Garage with internal access • Tiles throughout living and entry areas • Carpet in bedrooms • Downlights living and entry areas • Split system in living area • Dishwasher This property is currently rented at \$390.00 per week until July 2024. *Please note: photos were taken when property was vacant and are for illustration purposes only. RLA 222505.