

32 Prismatic Place, Leopold, Vic 3224

Sold Residential Land

Friday, 27 October 2023

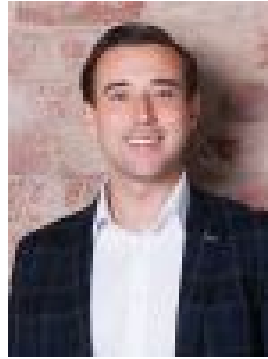
32 Prismatic Place, Leopold, Vic 3224

Area: 480 m2

Type: Residential Land



Jim Cross
0352232040



Brock Buchanan
0409899945

\$350,000

Introducing a 480m² (approx.) allotment in the thriving suburb of Leopold! Nestled in a coveted pocket, this titled allotment is minutes from The Gateway Plaza, Geelong CBD, Bellarine Peninsula, local schools and sporting facilities. Seize the moment to secure an allotment for your next home or investment property as titled allotments in this location are in high demand. - Envious 480m² (approx.) flat individual residential allotment- Allotments already titled, ready to be built on- Enjoy the benefits of an established locale near The Gateway Shopping Plaza- Seamless connectivity to both Geelong CBD and the picturesque Bellarine Peninsula- Well-established area with excellent access to local schools- Local wineries and enticing restaurants only a short drive- Surrounded by an array of scenic walking and biking tracks, along with top-notch sporting facilities