

320/121A Jerralong Drive, Schofields, NSW 2762

Apartment For Sale

Sunday, 26 May 2024



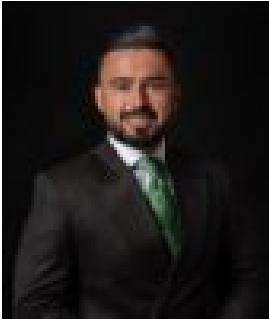
320/121A Jerralong Drive, Schofields, NSW 2762

Bedrooms: 2

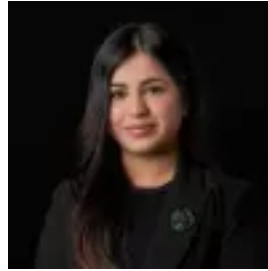
Bathrooms: 2

Parkings: 2

Type: Apartment



Amit Kumar
0288964336



Siya Sachdeva
0288964336

For Sale \$585,000

Situated on the of the best parts of Schofields, within short proximity to the premium Galungarra Public School Catchment and a five-minute walk to the Schofields Train Station and Schofields Village Shopping Centre, presenting to you a remarkable opportunity, to own this two bedroom apartment whether to settle in or to invest, this home features comfort and convenience for the whole family. This home boasts a spacious and light-filled open plan kitchen, living and dining area creating effortless flows between spaces and out through glass sliding doors to the extra-large balcony. Additionally, creating a perfect blend of indoor and outdoor entertaining areas. The modern kitchen is well-appointed and features high-quality stainless-steel appliances, a burner gas cooktop and 600mm oven, marble benchtops, and glass splashbacks with floorboards. Accommodation comprises two good-sized bedrooms all to their built-in robes with the master bedroom featuring a private ensuite bathroom. Both bathrooms have quality inclusions, including floor-to-ceiling tiles, as well as an abundance of storage space. Other features you will love:- LED downlights- Ducted air conditioning- Floorboards throughout- Builder: ALAND- Two car spaces with storage cage- Visitor parking is available- Access to a BBQ area and children's playground in the common area, perfect for family gatherings- Secure complex- Video intercom

Location highlights:- Short walk to the ever-popular Glory Park- 1-minute drive and a 5-10 minute walk to Schofields Train Station and shopping centre- 3-minute drive and a 10-minute walk to the premium Galungarra Public School- 6-minute drive to Tallawong Metro Station and on-demand bus service available- 5-minute walk to Alex Avenue Medical Centre- Short walk to multiple childcare centres on Alex Avenue- 5-minute walk to St Joseph's Primary School on Alex Avenue- 9-minute drive to Rouse Hill Town Centre and the upcoming Rouse Hill Hospital- Surrounded by multiple parks- Reasonable commute to Sydney CBD

Disclaimer: All information contained herein is obtained from property owners or third-party sources which we believe are reliable. We have no reason to doubt its accuracy, however, we cannot guarantee it. All interested person/s should rely on their enquiries.