

# 320 Riversdale Road, Hawthorn East, VIC, 3123

## Sold House

Monday, 15 May 2023

320 Riversdale Road, Hawthorn East, VIC, 3123

**Bedrooms: 3**

**Bathrooms: 2**

**Parkings: 1**

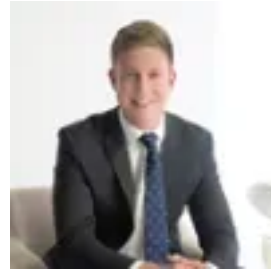
**Type: House**



Robert Le



Hamish Tostevin



Tom Rogan

## **Captivating Period Charm With Modern Amenities**

Exquisitely renovated, this exceptional family home offers a spacious, stylish sanctuary in a prized position between Beaconsfield Rd & Tooronga Road. With all the advantages of an unbeatable location in the Camberwell Primary School zone and just a short walk to local Tooronga Road eateries and Camberwell Junction's shopping and dining mecca, tucked away is a home of size, quality and beauty, with enviable living and entertaining spaces both inside and out. Timelessly elegant, beyond the traditional facade of this double-brick, semi-detached Edwardian discover three oversized, luxurious bedrooms, including a stylish master with ensuite, versatile front bedroom with stunning bay windows and a sleek central bathroom. A bright, wide hall with skylights leads to a large and light-filled open-plan living, kitchen and dining space that is simply a sight to behold, with capacity for even the largest celebrations and complemented by a covered alfresco dining deck with in-built gas BBQ, overlooking the lush garden. Everything about this home speaks of quality and style, from beautiful timber floors to high ceilings, ducted gas heating, security alarm and CCTV system, multiple split-system air conditioners, plantation shutters, large skylights, stone benches and SMEG appliances. A stunning home in a superb, inner-city location with access to sought-after local schools and Melbourne's elite private school belt. Convenient off-street parking completes this private oasis, with easy freeway access and just a short walk to all the delights of Burke Road, Rivoli Cinema, Fritsch Holzer Park, trains and trams into Richmond and the city.