

320A Pascoe Vale Road, Essendon, Vic 3040



Townhouse For Sale

Monday, 18 March 2024

320A Pascoe Vale Road, Essendon, Vic 3040

Bedrooms: 3

Bathrooms: 1

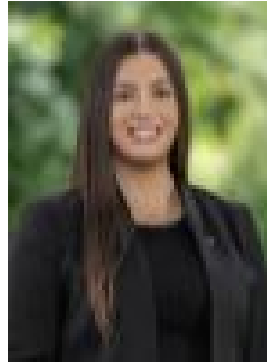
Parkings: 4

Area: 347 m2

Type: Townhouse



John Morello
0393792000



Alicia Vavassori
0393792000

\$800,000 - \$880,000

A value-packed entry into Essendon, this double-storey home occupies a wonderfully deep block of land providing a lifestyle of comfort and convenience along with terrific scope to enhance and expand (STCA). Beyond the distinctive period-inspired facade you'll find a well-presented interior comprising three bedrooms (two large with BIRs) complemented by a neat central bathroom and two separate WCs – one on each level. Add to this a sizeable front living room flowing through to the light-filled open dining area and adjoining kitchen with gas cooker. Other features of the home include ducted heating and evaporative cooling for all-seasons enjoyment, along with a full-size laundry and under-stair storeroom. Step outside to discover an expansive backyard complete with alfresco area and large entertaining deck, plus the unique advantage of a double garage/workshop and additional tandem double carport. A short stroll to Strathmore Station, Cross Keys Reserve and the Moonee ponds Creek Trail, it's also close to Strathmore Secondary College (zoned), local cafes and Woodland Street shops, as well as easy access to Citylink.