

324/3 Josue Crescent, Schofields, NSW 2762

Sold Apartment

Saturday, 23 September 2023



324/3 Josue Crescent, Schofields, NSW 2762

Bedrooms: 2

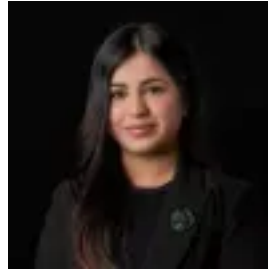
Bathrooms: 1

Parkings: 1

Type: Apartment



Amit Kumar
0288964336



Siya Sachdeva
0288964336

\$550,000

Located in the heart of Schofields, within proximity to Tallawong Metro Station, Schofields Train Station, local schools and parks, as well as the upcoming Schofields Shopping Centre, this property is ideal for growing families. Complete with high-quality finishes throughout, and very well maintained by the current owners you will want to call this one yours! This home boasts a spacious open-plan living and dining area which flows seamlessly through glass sliding doors to the extra-large balcony, which creates a perfect blend of indoor and outdoor entertaining areas. Other features:- Dual access balcony- Common BBQ area and underground visitor parking- Extensive storage throughout- Intercom security system- Spacious bedrooms both with built-in robes- Ducted air-conditioning Location highlights:- 5-10-minute walk to Schofields Public School- 5-20-minute walk or 4-minute drive to Schofields Train Station and Schofields Village Shopping Centre- Multiple bus services are available within a short walking distance- 5-minute drive to Tallawong Metro Station- 3-minute drive to the local retail precinct with cafès- Walking distance to multiple parks Set in the most convenient location, with all amenities you could need close by and complete with high-quality finishes throughout, this is one that the family will love. Disclaimer: All information contained herein is obtained from property owners or third-party sources which we believe are reliable. We have no reason to doubt its accuracy, however, we cannot guarantee it. All interested person/s should rely on their own inquiries