

325/2 Gillies Street, Essendon North, Vic 3041

Apartment For Sale

Monday, 17 June 2024

325/2 Gillies Street, Essendon North, Vic 3041

Bedrooms: 1

Bathrooms: 1

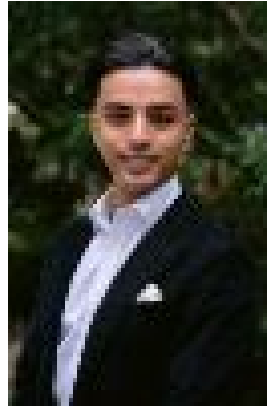
Parkings: 1

Area: 51 m2

Type: Apartment



Ray Mirza
0409557788



Tyson Cardamone
0411462539

\$310,000 - \$340,000

Situated only moments from the heart of North Essendon Village, on offer is superb 1-bedroom plus study residence, enjoying a modern low-maintenance lifestyle in a sought-after, ultra-convenient location. Perched in an elevated position on the third floor of "The Gill", the residence begins with a bright-open plan living and dining zone set atop beautiful timber flooring. Making an effortless transition outdoors, the undercover balcony is perfect for alfresco dining and waking up over morning coffee, while enjoying a sunny northerly aspect. For those working from home, the purpose-built study nook bolsters productivity with its built-in desk. Superbly appointed, the galley-style kitchen showcases quality stainless steel appliances, including gas cooktop, under-bench oven, and dishwasher, complemented by a deep double sink and plenty of storage. Teamed with easy to wipe down surfaces, get back to doing the things you love sooner. Well proportioned, the master bedroom boasts plush carpet underfoot and direct access to both the balcony and the central bathroom. Fitted with block-out roller blinds, enjoy the best of both worlds with a dark room by night for a peaceful sleep, and a light-filled place to relax during the day. Centrally located, the sparkling bathroom draws inspiration from hotels, comprising a frameless glass shower with rain showerhead, floating vanity with storage underneath, and a sleek toilet. Whether you're getting ready for the day or unwinding at the end of the week, the bathroom strikes a balance between elegant and practical. Other features include one undercover car space, storage cage, and ducted heating and cooling for year-round comfort. Ideally located, only moments to Keilor Road shops and eateries, acclaimed North Essendon Village, L.T Thompson Reserve, Woodlands Park, DFO Essendon, and Central Shopping Centre Niddrie. When it's time to venture further, the route 59 tram is on your doorstep, Essendon and Glenbervie Railway Stations are equidistant, and the Bulla Road freeway interchange is reached in minutes, providing ease of access across Melbourne.