

32A Galton Street, Wetherill Park, NSW 2164



Duplex/Semi-detached For Rent

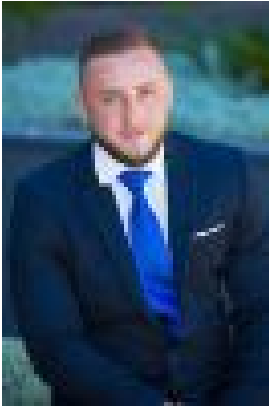
Tuesday, 7 May 2024

32A Galton Street, Wetherill Park, NSW 2164

Bedrooms: 2

Bathrooms: 1

Type: Duplex/Semi-detached



Bobi Mackovski
0430405003

\$550.00

Nestled in Wetherill Park's highly desirable neighborhood, this contemporary granny flat offers unparalleled convenience and comfort. Featuring: Two spacious bedrooms complete with built-in wardrobes Fully tiled open plan living area for seamless entertainment Modern kitchen equipped with stainless steel appliances and gas cooking facilities Stylish bathroom and laundry amenities Split-system air conditioning for climate control Separate low maintenance backyard for privacy and relaxation Ideally situated within walking distance to a range of public and private schools, Stocklands Mall, and transportation hubs, this property offers the epitome of modern living in a sought-after locale. Opportunity to Lease House & Granny Flat together for \$1250.00 per week