

32A Lee-Ann Crescent, Croydon, Vic 3136



Sold House

Wednesday, 4 October 2023

32A Lee-Ann Crescent, Croydon, Vic 3136

Bedrooms: 3

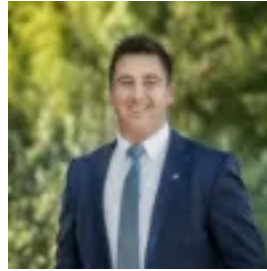
Bathrooms: 2

Parkings: 2

Type: House



Ash Thompson
0398706211



Alan Hodges
0398706211

\$881,000

Enjoying exceptional privacy at the rear of the block, this beautifully presented contemporary townhouse boasts direct gated access to lush Brushy Creek Trail bushland. Superbly laid out for family living, or for those looking to downsize without compromise, the home is also within easy reach of Esther Park, Chirnside Park Shopping Centre, Mooroolbark Station and local Mooroolbark shopping and restaurants. Freshly painted throughout and showcasing lofty high ceilings and gleaming bamboo timber flooring, the home presents an inviting sense of space and light throughout. An open plan living and dining area flow seamlessly out through bifold doors to a generous undercover alfresco area, ideal for relaxed outdoor entertaining. Adjacent, quality artificial turf is framed by leafy private borders and a mature eucalyptus, with the gardens also featuring gardenias at the entry. The spacious contemporary kitchen comprises stone waterfall benchtops, a breakfast bar, ample soft-close storage, and quality stainless steel appliances including a pyrolytic oven, a 900mm gas cooktop, and a Bosch dishwasher. Conveniently positioned on the ground floor, the oversized master bedroom includes a large walk-in wardrobe plus a luxe fully tiled ensuite. Elevated on the upper level, two robed bedrooms each offer enchanting views across native bushland, and are complemented by a bright study space and an airy central bathroom with floor-to-ceiling tiling, a separate bathtub and a separate W/C. The home also includes a third guest W/C and a full laundry. Featuring gas ducted heating, split system air conditioning in the living area and all bedrooms, a solar hot water system, a Bosch alarm system and a lock-up garden shed, the home includes a remote double lock-up garage with rear roller door access. Zoned for both Mooroolbark College and Manchester Primary School, the location is also close to Oxley Christian College and Luther College.