

33 Chisholm Avenue, Clemton Park, NSW 2206



House For Sale

Tuesday, 16 January 2024

33 Chisholm Avenue, Clemton Park, NSW 2206

Bedrooms: 3

Bathrooms: 2

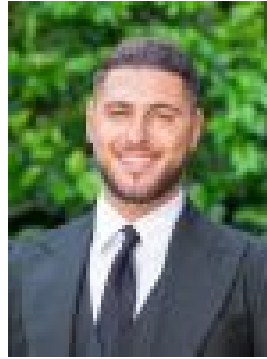
Parkings: 2

Area: 474 m2

Type: House



Gina Alexiou



Gregory Kolyvas
0412357849

Guide \$1,400,000

Presented to the market for the very first time in 68 years, this double brick home with separate studio is overflowing with character and enormous future potential. It's an easy walk to Clemton Park Shopping Village, while just minutes from local schools and the M5 Motorway.- Versatile layout offering both formal and casual living zones- Huge rear family room showcasing exposed brick and high ceilings- Central kitchen adjoins family room- Choice of two bedrooms with optional third bedroom in lieu of formal lounge/dining - Main bathroom offers combined shower and bath, separate w/c - Rear studio appointed with Murphy bed, modern bathroom and laundry- Covered entertaining area extending to landscaped rear garden- Designated internal laundry room, ducted air conditioning- Carport and remote lock-up garage plus garden shed/workshop- Walk to Yatama Park and Clemton Park village cafes, restaurants and supermarket