

33 Cornus Crescent, The Ponds, NSW 2769

Sold House

Monday, 14 August 2023



33 Cornus Crescent, The Ponds, NSW 2769

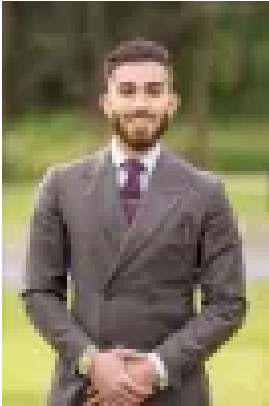
Bedrooms: 4

Bathrooms: 2

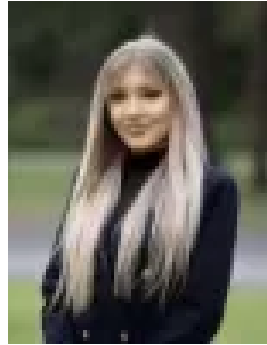
Parkings: 1

Area: 300 m2

Type: House



Hardii Admin
0298381529



Alex Molodykh
0298381529

\$1,195,000

Your Gateway to Excellence and Tranquility in the Prestigious Community of The Ponds! Nirvana Estate Agents presents this single-storey haven in the prestigious community of The Ponds. One of the remarkable features of this property is its enviable location, just a short stroll away from the highly acclaimed Riverbank Public School. Your family will relish the convenience of having this prestigious, highest-ranked institution within walking distance, ensuring top-tier education for your children. As you approach 33 Cornus Crescent, you'll be greeted by its tranquil cul-de-sac setting. Tucked away on a quiet and private street, this residence offers the perfect escape from the bustling city life. This cul-de-sac not only ensures peace and serenity but also provides ample parking space for multiple vehicles, catering to the needs of a growing family or those who frequently entertain guests.

Property Features: -- 4 Generous-sized Bedrooms, all with built-ins and master with a walk-in- 2 Stylish Bathrooms with floor to ceiling tiles and a free-standing bathtub in main bathroom- Fully tiled and covered alfresco area for outdoor activities- Modern kitchen with 900mm gas cooktop, 40mm stone bench top, stainless steel Fisher & Paykel Appliances, breakfast bar, dishwasher and walk-in pantry- Open plan living space consisting of dining and family area leading to oversized alfresco- Internal laundry with extra storage- Auto lock up garage with internal access

Distance to Local Amenities :- 1.7km from The Ponds High School (3 minute drive)- 1.8km from Riverbank Primary School, The Ponds (3 minute drive)- 1.2km from St John Paul II Catholic College (2 minute drive)- 2.3km from Hambledon Public School (4 minute drive)- 750m from Ridgeline Park (1 minute drive)- 3.6km from Schofields Train Station (5 minute drive)- 3.2km from Tallawong Metro Train Station (5 minute drive)- 2.2km from The Ponds Shopping Centre (3 minute drive)

Please call Hardii on 0426 613 165 for more information or to arrange a private inspection.

Disclaimer: Nirvana Real Estates, its directors, employees and related entities believe that the information contained herein is gathered from sources we deem to be reliable. We have no reason to doubt its accuracy, however we cannot guarantee it. All interested parties should make and rely upon their own enquiries.